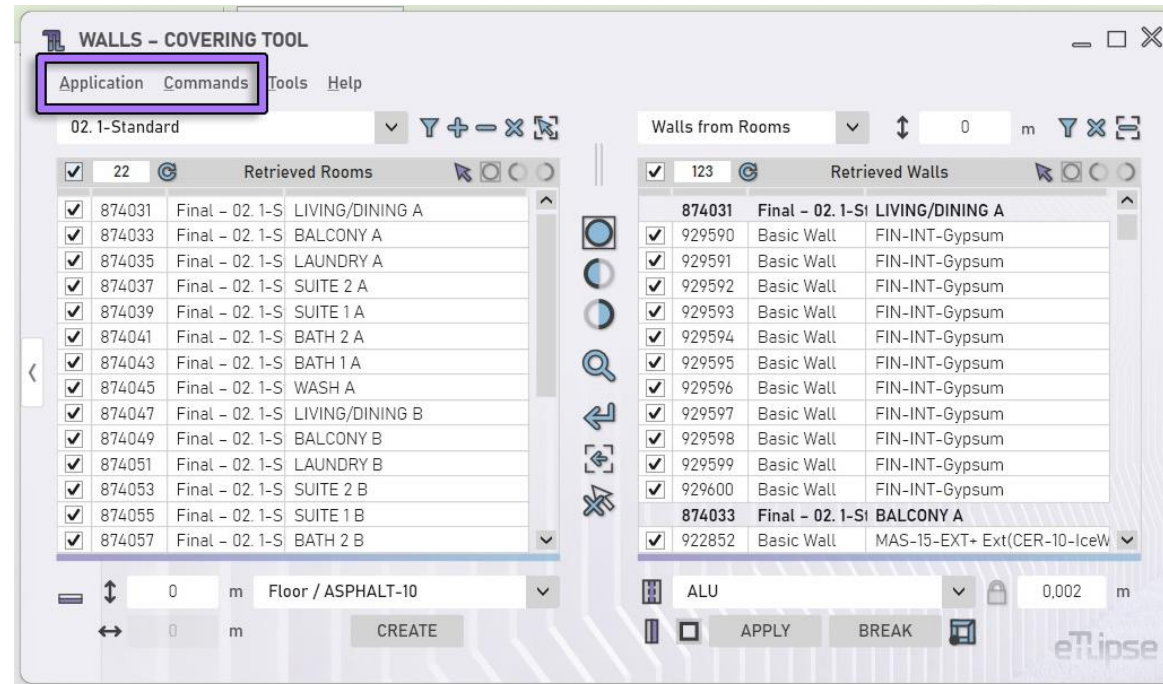


# TL General Menus

GUIDE (English)

April 14, 2024

## TL GENERAL MENUS \ \ GUIDE



The **TL Elements**, **TL Solids** and **TL Elements Xpress** applications (therefore called **TL applications**) present in their main windows a top menu bar that grants access to general tools and command-specific tools.

The general tools are the ones present at the menus of each main window of the application (indicated in the image). They are the same for different commands of the application (if the application supports multiple commands, which is the case of TL Elements). When a setting of these tools is changed in one command it will keep changed when another command is executed.

The command-specific tools are the ones specific to each command of the application. There are specific menu tools for TL Filter, TL Walls, TL Frames, TL Solids, TL Parts and TL Elements Xpress separately.

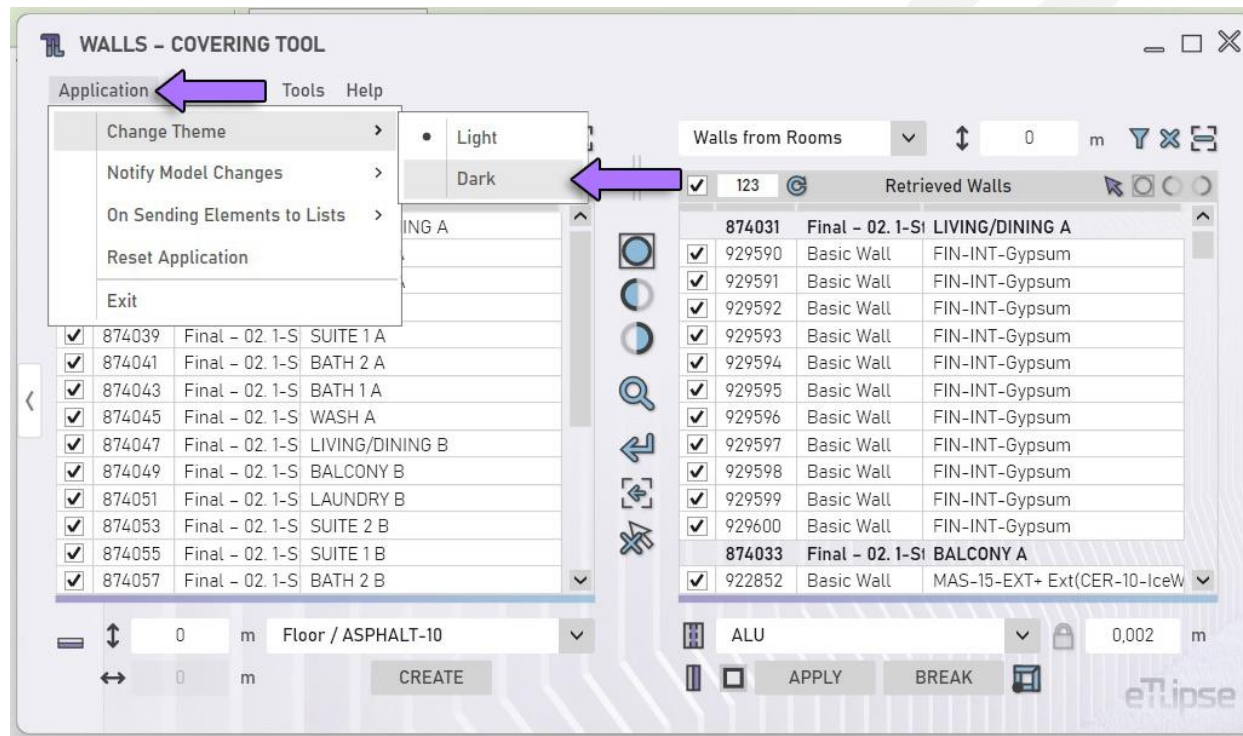
Here we will explain the use of the general tools. Explanation about the use of command-specific tools is provided in the guides for their respective commands.

## TABLE OF CONTENTS

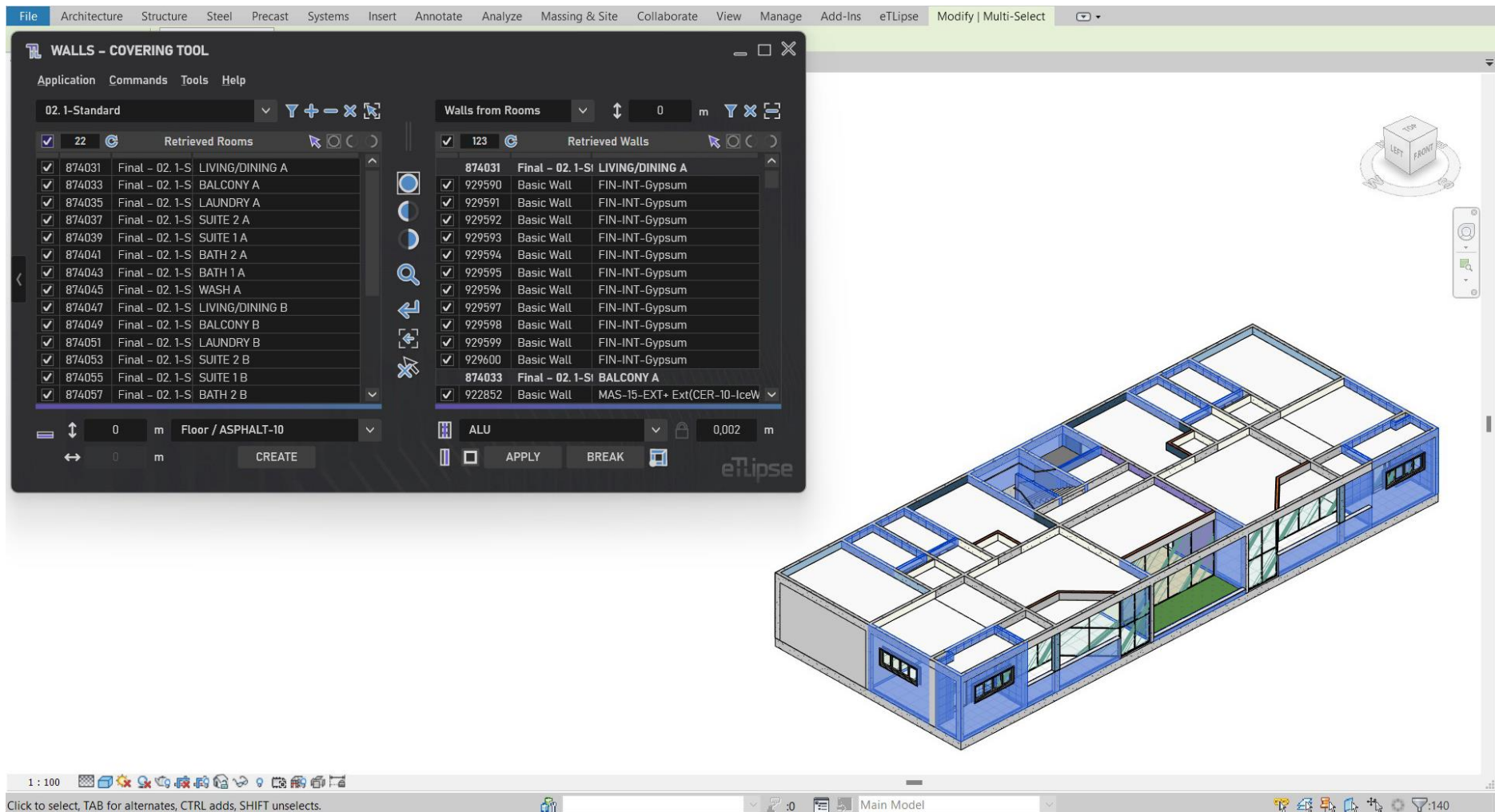
<b>Theme Choice and Buttons Color Logic .....</b>	<b>4</b>
<b>Notification of Model Changes .....</b>	<b>7</b>
<b>Sending Elements to List .....</b>	<b>11</b>
<b>Limit Retrievals to Visible Elements .....</b>	<b>12</b>
<b>Reset Application .....</b>	<b>13</b>
<b>Navigating TL Commands .....</b>	<b>14</b>

## Theme Choice and Buttons Color Logic

It is possible to use two different color themes in TL applications. The first one is the Light theme, the default one, which we can see applied in the first image. The second one is the Dark theme.



To change the theme at any time we can go to the menu Application>**Change Theme**, as we can see in the first image.

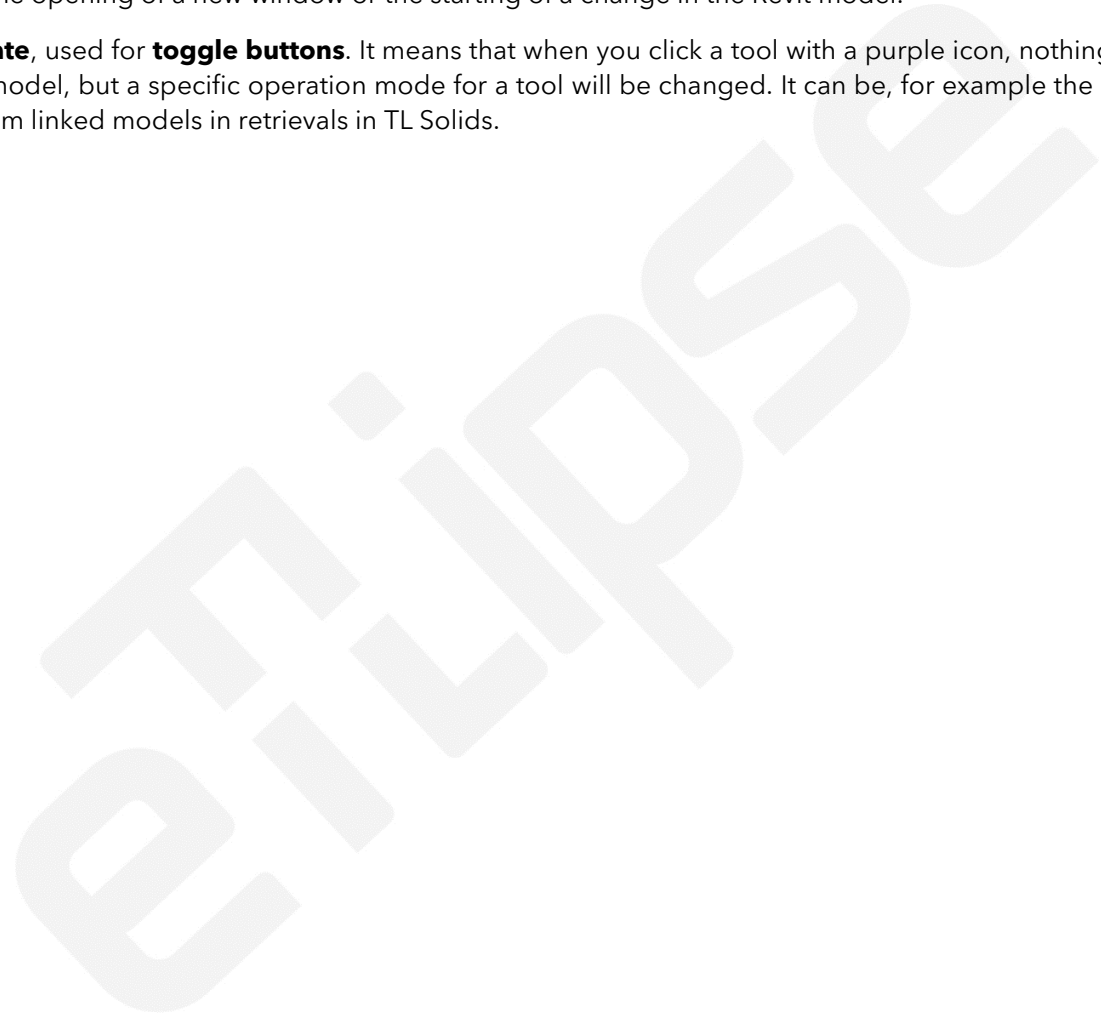


In the second image we have a shot of the interface with the Dark theme applied.

One thing that is very important to know about the colors of buttons and toggle buttons in TL applications is that they will keep their colors regardless of the chosen theme, and there is a reason for this. The blue and purple colors depict distinct functions:

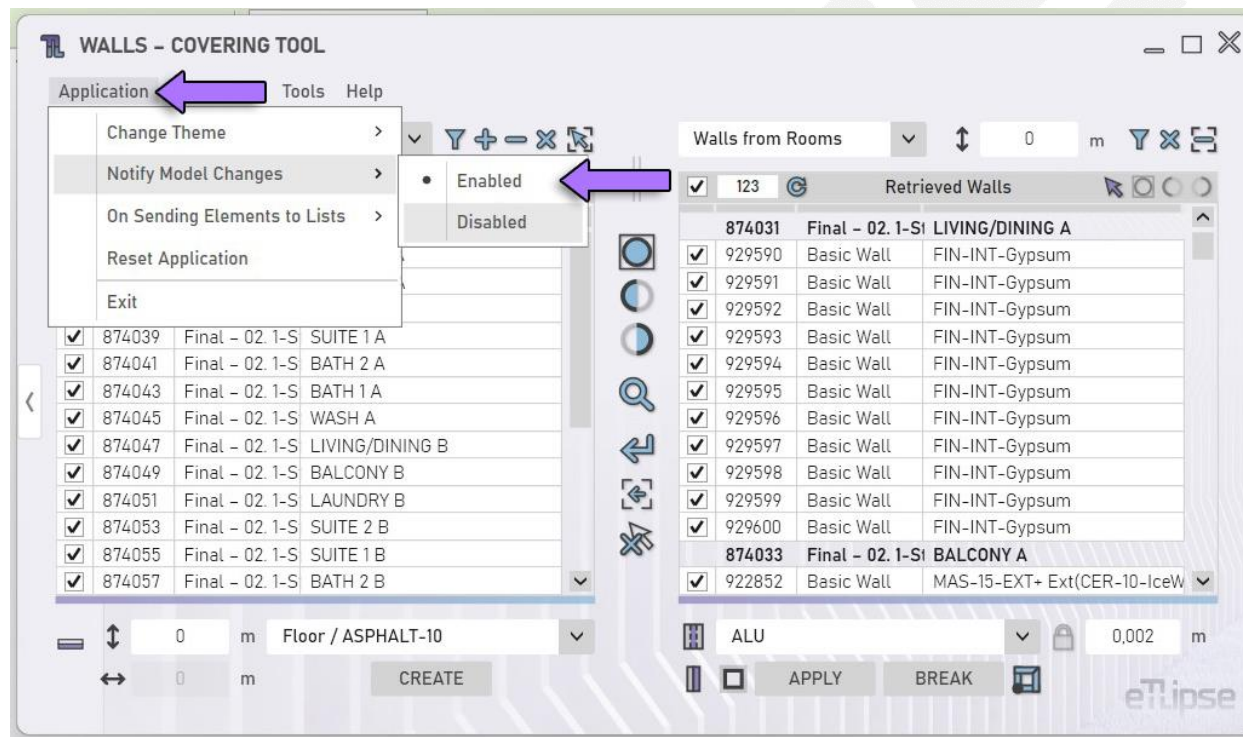
**Blue:** means **action**, used for **buttons**. It means that when you click a tool with a blue icon, some execution will take place. It can be an operation with items in a list, a resetting of options, the opening of a new window or the starting of a change in the Revit model.

**Purple:** means **changing of state**, used for **toggle buttons**. It means that when you click a tool with a purple icon, nothing will directly change in the lists of the application or the Revit model, but a specific operation mode for a tool will be changed. It can be, for example the switch between the modes that include or exclude elements from linked models in retrievals in TL Solids.

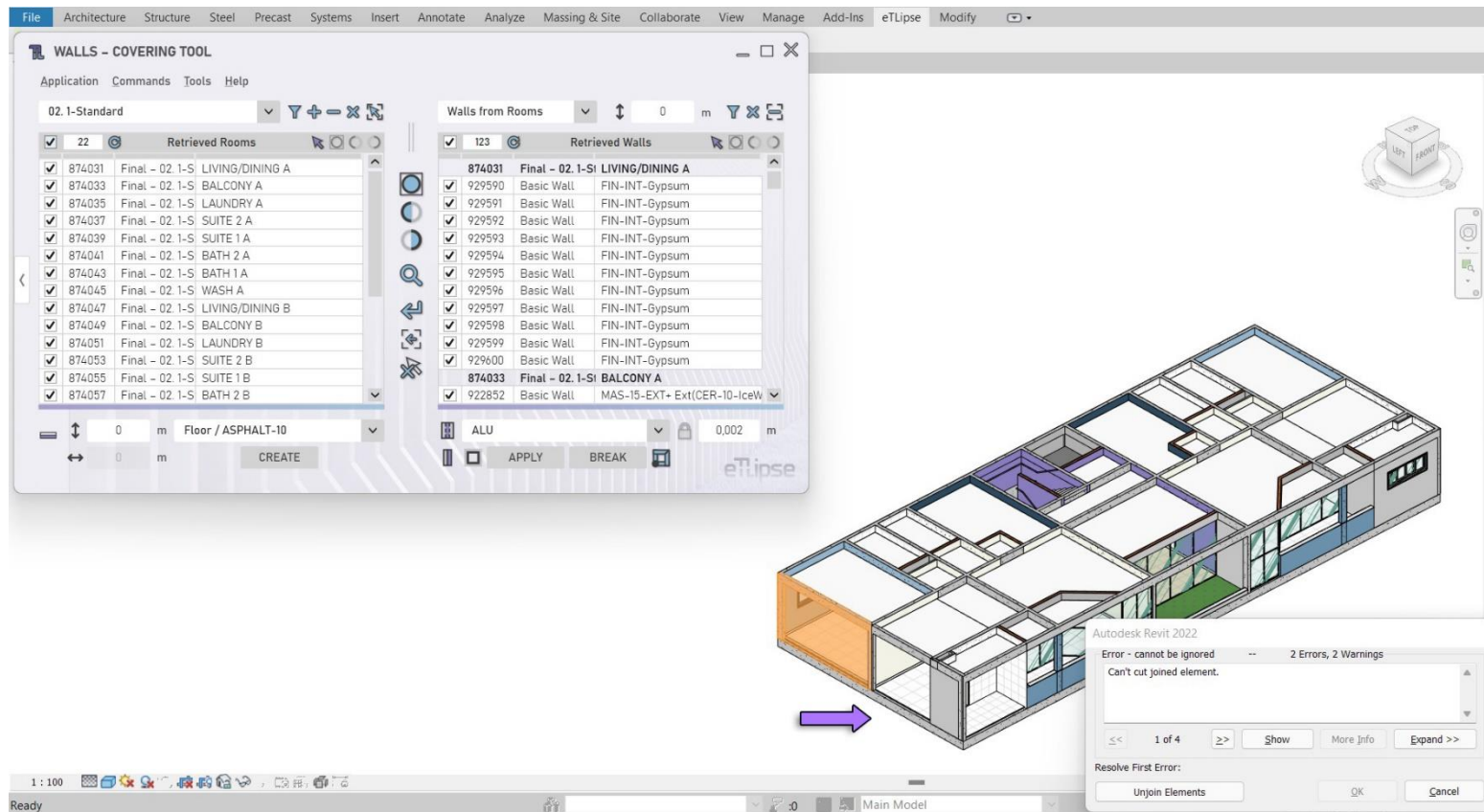


## Notification of Model Changes

All main TL commands provide lists as the interface to manage, select and use Revit elements in operations. One of the most common causes of errors while performing these operations is the presence of problematic elements in the lists. This is the case of elements that were deleted, renamed, moved or changed in any way in Revit (changes of family geometry, parameters, parameter values, etc.), for example. If these elements are not properly updated or deleted in the lists of the application as well, they will probably cause errors and cancel operations.

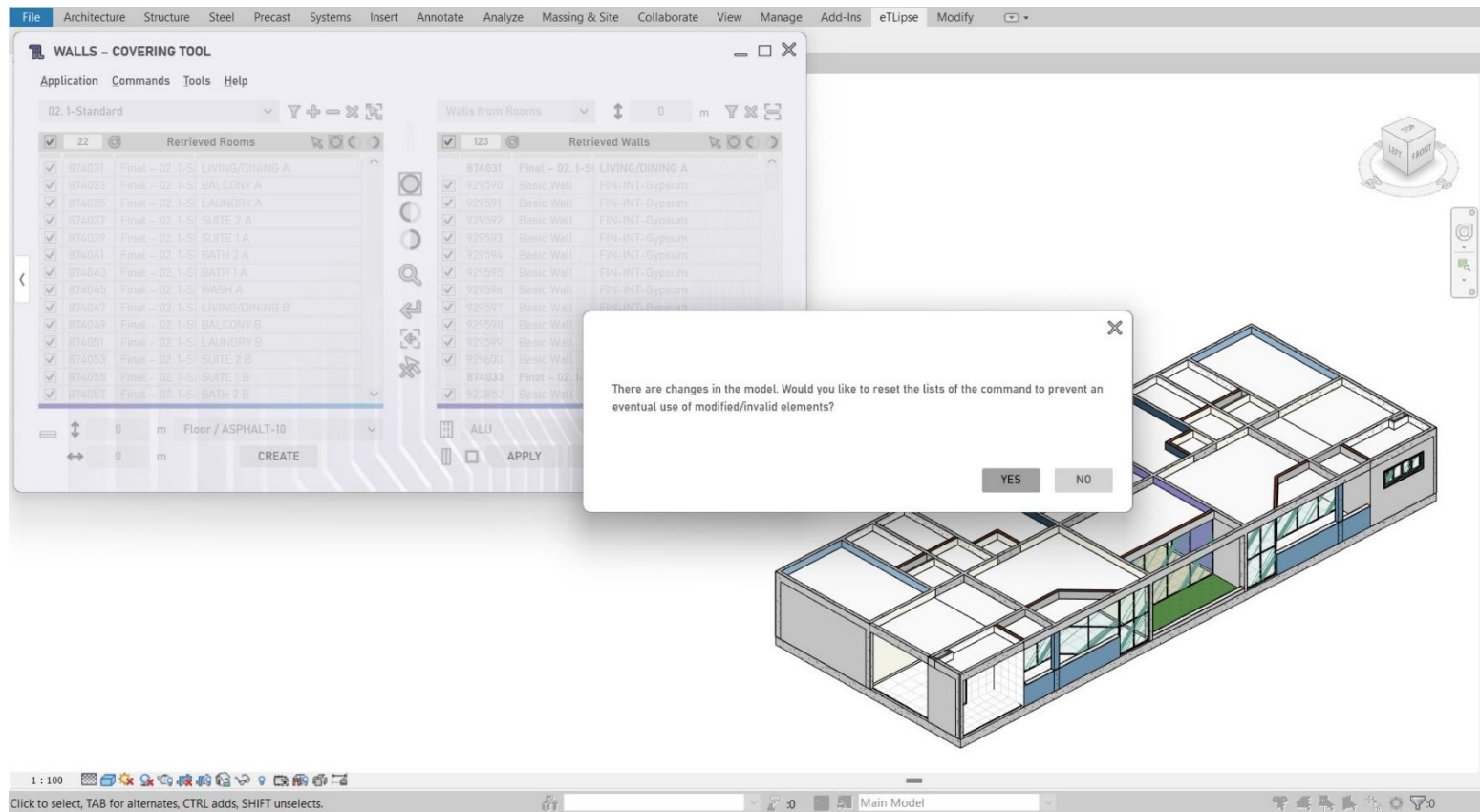


In order to prevent this scenario, TL applications can show a notification whenever the user returns to one of its windows after any change in the Revit model. The notification will inform the user that a change in the model took place in Revit and will ask if the lists in the application should be reset. To enable this feature by going to the menu option **Application > Notify Model Changes**, as seen in the first image.

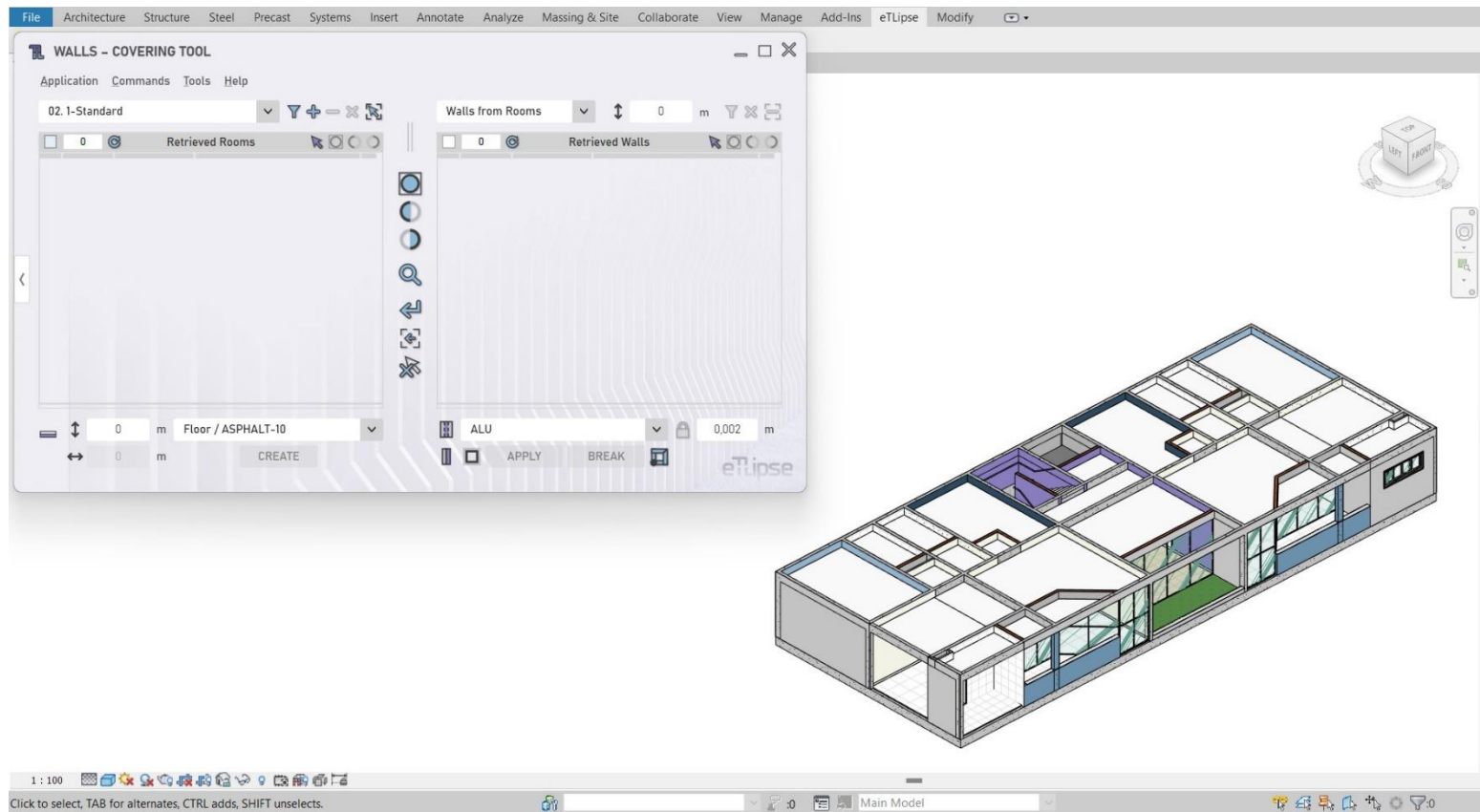


In the second image, we have an example where we can see that some walls were deleted from the model in Revit.



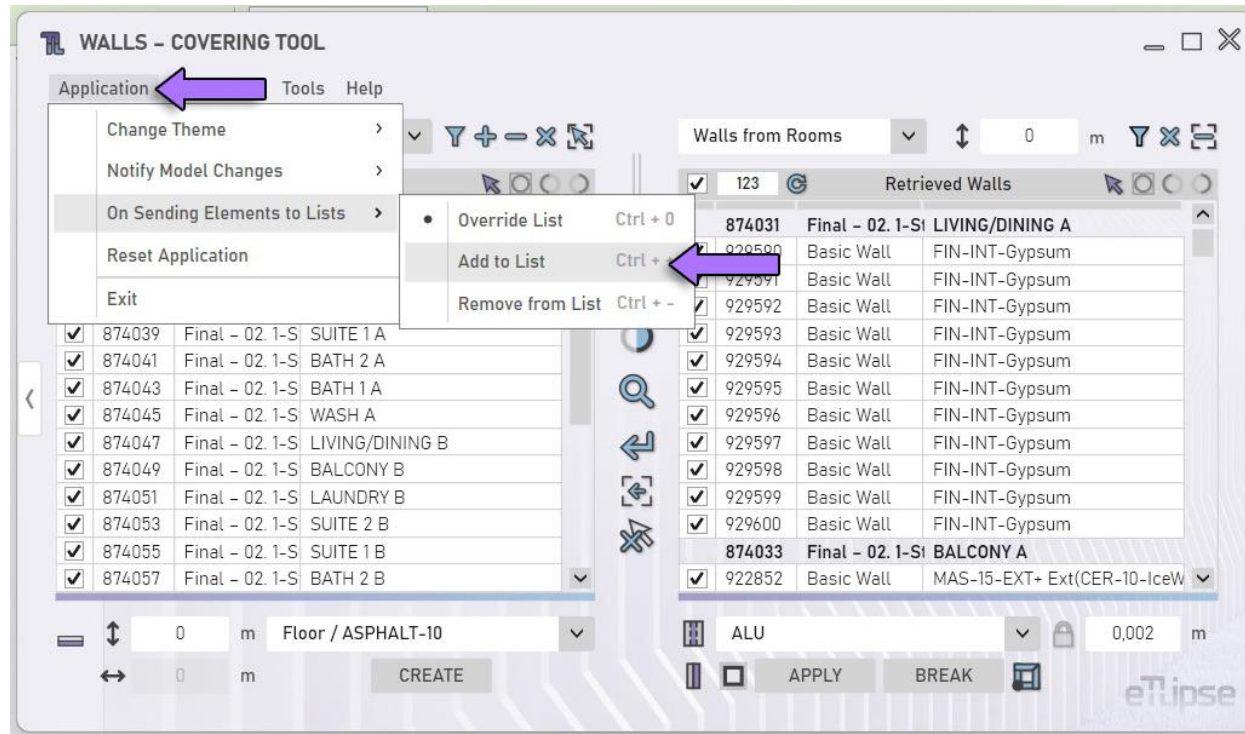


As we return to the TL application interface, we receive the notification with the option to reset our lists, as we can see in the third image.



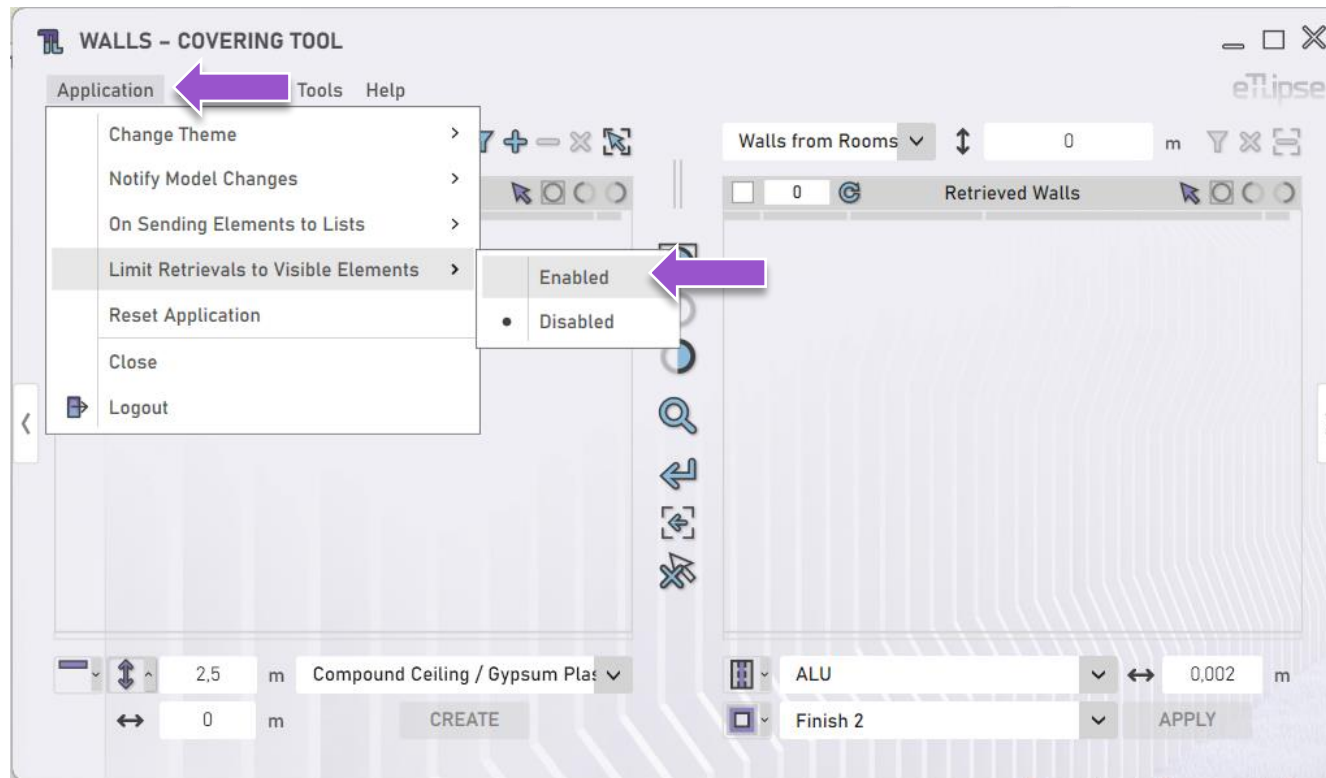
In the fourth image we can see that the lists were cleared to prevent the use of invalid elements (also, the lists with Revit types, levels and materials are now updated).

## Sending Elements to List



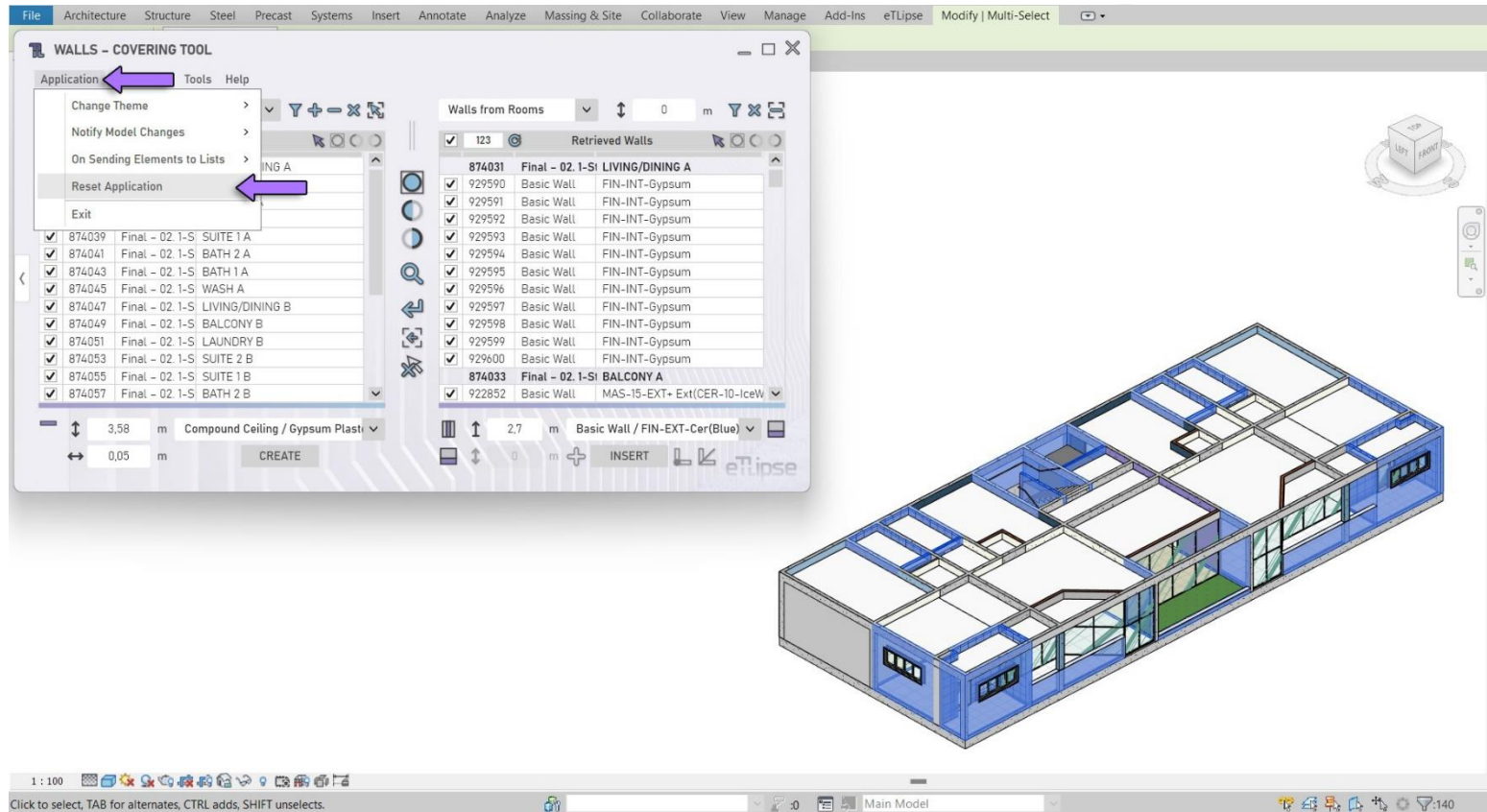
There are different modes for elements transfer between TL commands and, also, the Revit active view and TL applications. But this feature will be explained in the specific sections for each TL command.

## Limit Retrievals to Visible Elements



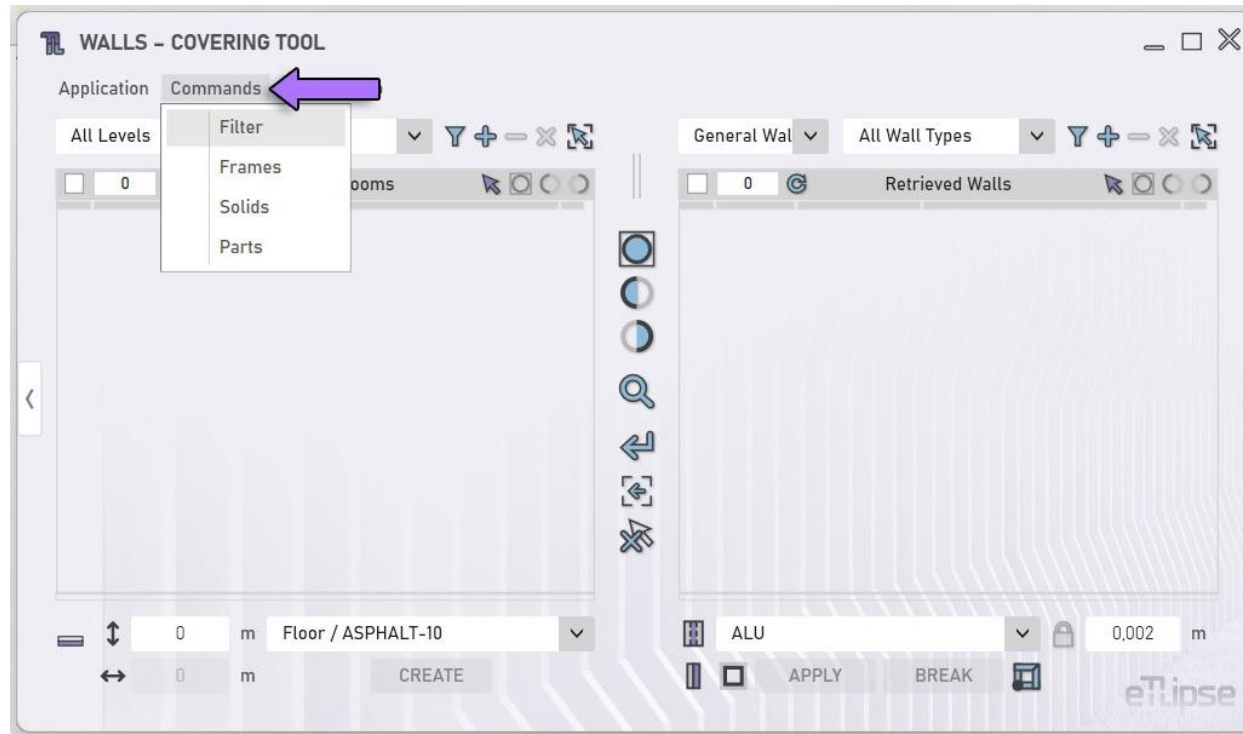
To limit the elements retrievals of all commands of the application to the elements visible in the active view in Revit, we can enable the respective option at the menu Application > **Limit Retrievals to Visible Elements**.

## Reset Application



Whenever we want to clear the lists and reset the current TL application to its default values, we can use the menu tool Application>**Reset Application**, as indicated in the image.

## Navigating TL Commands



It is also possible to load other TL Commands at any time, by simply going to the menu tool **Commands** and choosing the one of the listed commands, as seen in the image.

This menu option is only available in TL Elements, since the free versions of TL Solids and TL Elements Xpress do not present multiple TL commands to work with.