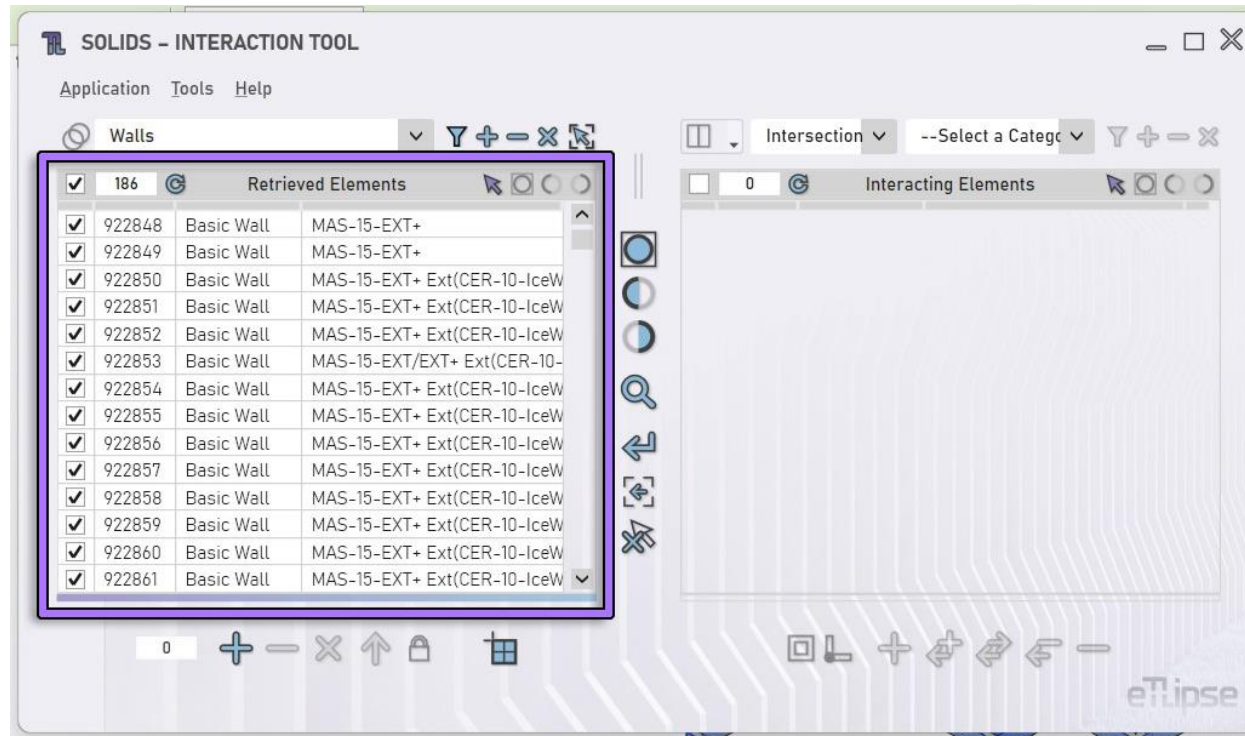


TL List

GUIDE (English)

April 14, 2024

TL LIST \ \ GUIDE



The **TL Elements**, **TL Solids** and **TL Elements Xpress** applications (therefore called **TL applications**) present lists as the main interface to manage, select and use Revit elements in the operations of their commands (as indicated in the image). These lists generally present 4 (four) columns. The first is for checkboxes that toggles the selection of elements bound to the items. The second is for the identification number of the element/type in Revit. The third and fourth columns vary based on the available properties of the listed elements (they can expose the element's material, family name, type, level etc.).

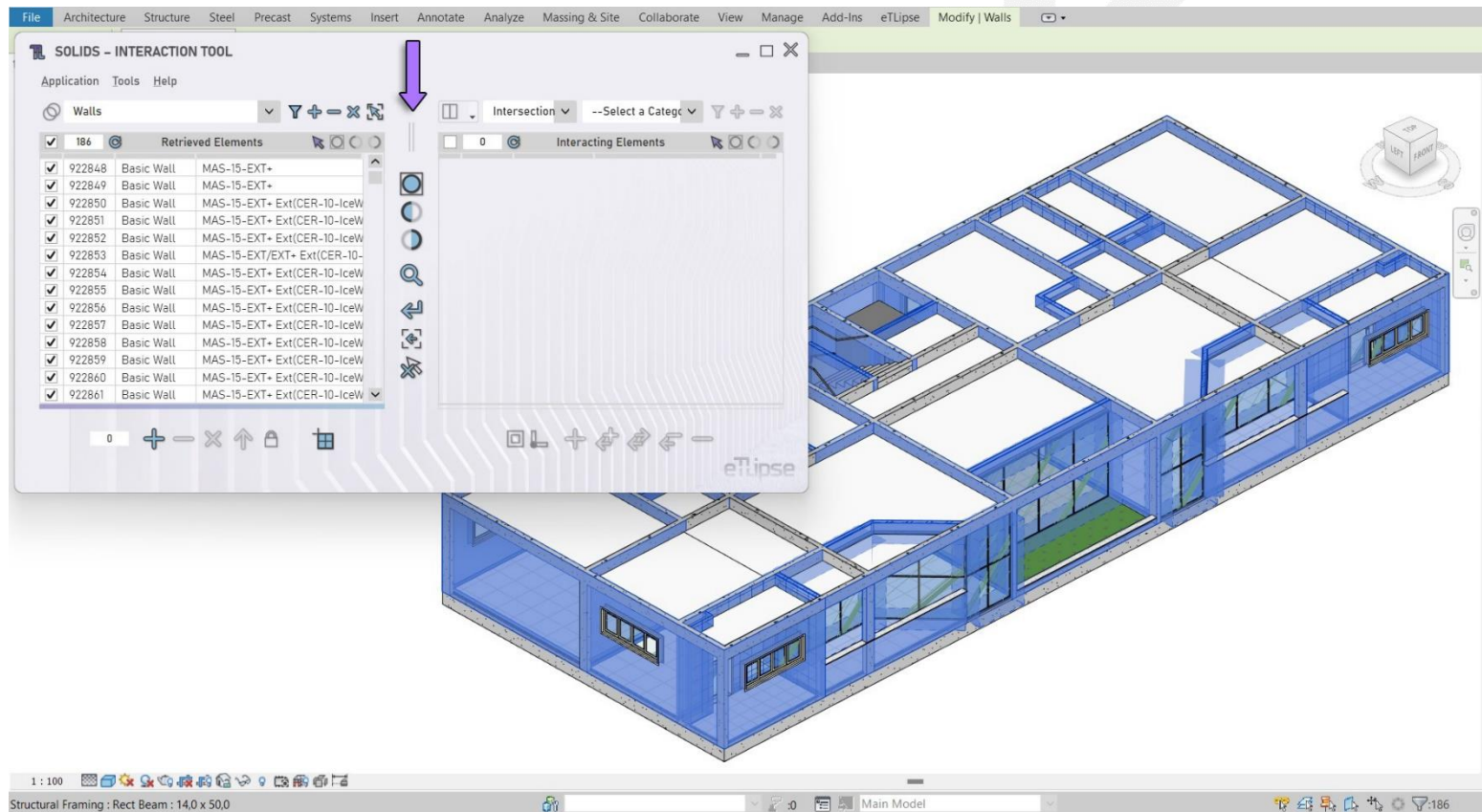
A TL List is an interface control with its own tools and core functionalities. Here we will explain the use of these features.

TABLE OF CONTENTS

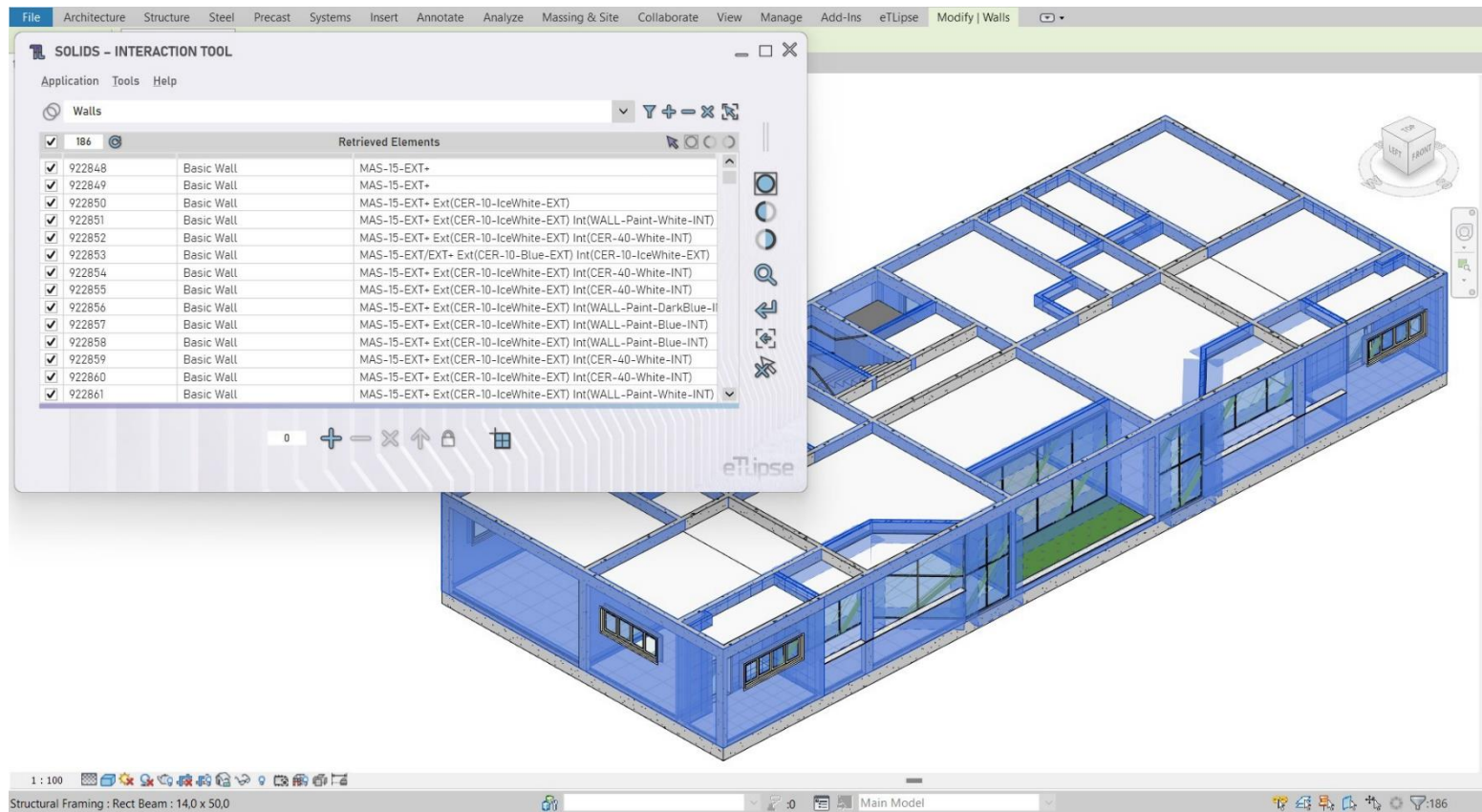
GENERAL TOOLS	4
List/Content Resizing	4
List Status	7
List Counter	8
Check/Uncheck All Items	9
Manually Checking Items	11
Filter List	13
Sorting the List	15
CONTEXT MENU	16
Select All	17
Clear Selection	19
Filter Checked Items	21
Invert Checks	23
Check/Uncheck All	25
Copy Row Content	27
Copy Row Content (CSV)	29
Copy Fields	31

GENERAL TOOLS

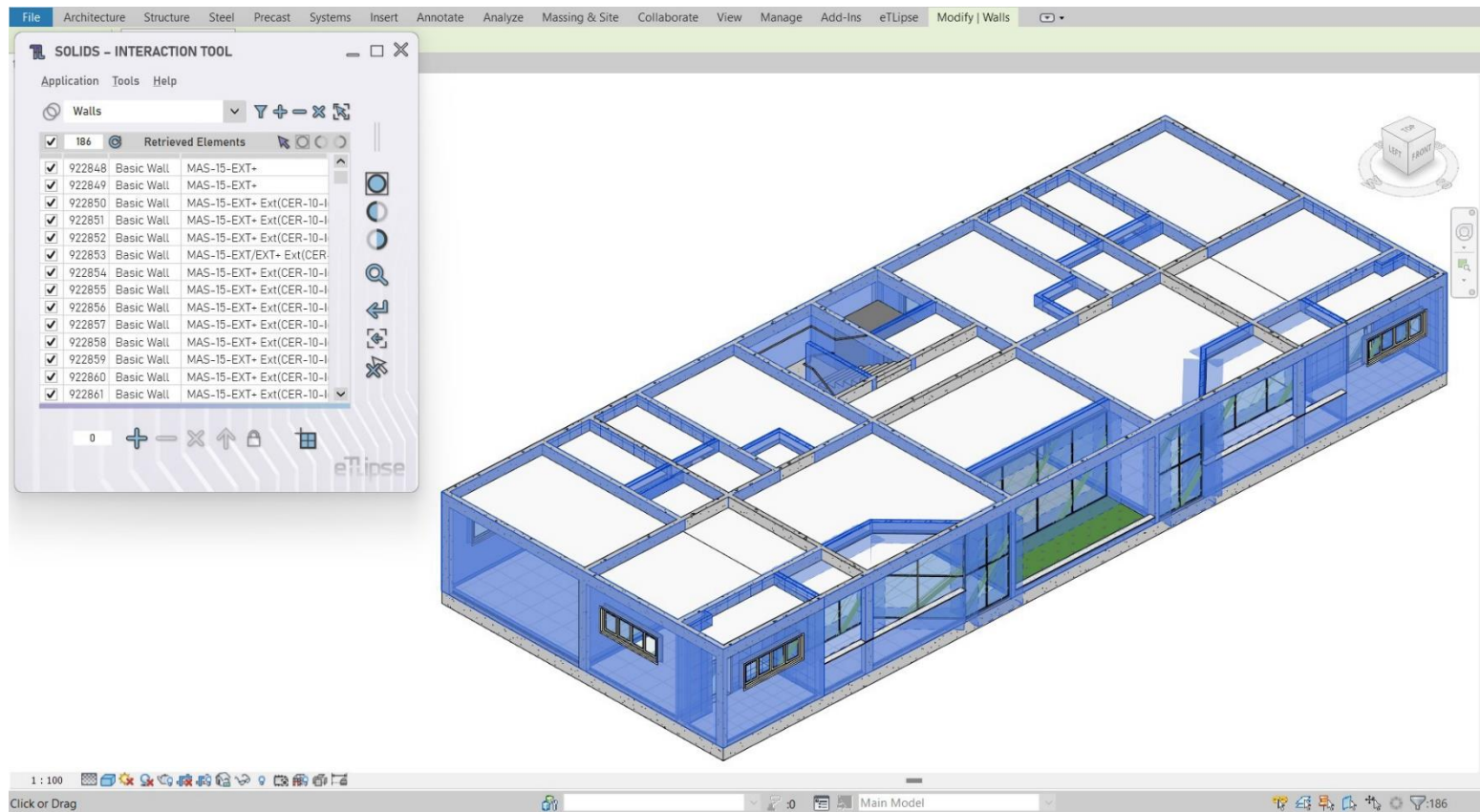
List/Content Resizing



By using the resizing grip/handle available in most of the TL commands and indicated in the first image, it is possible to resize the content of the main window.

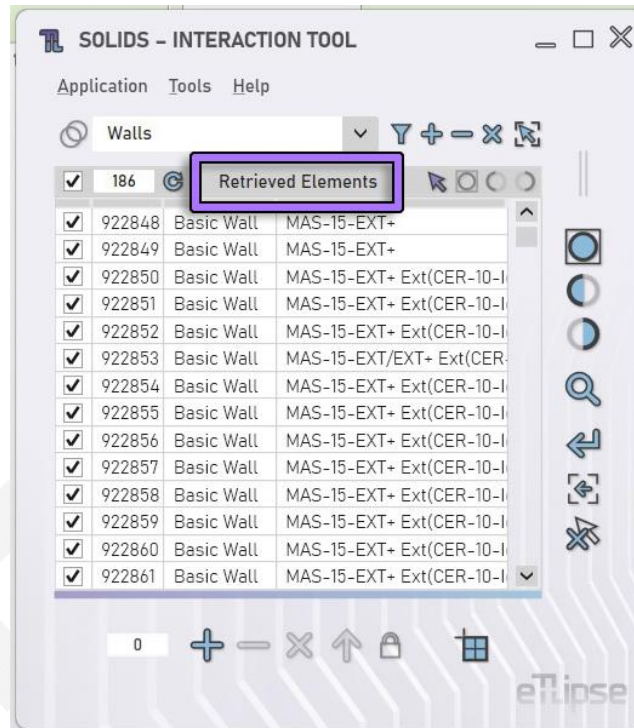


In the second image, we can see an example where the grip was moved to fully expand the list at the left side of the window.



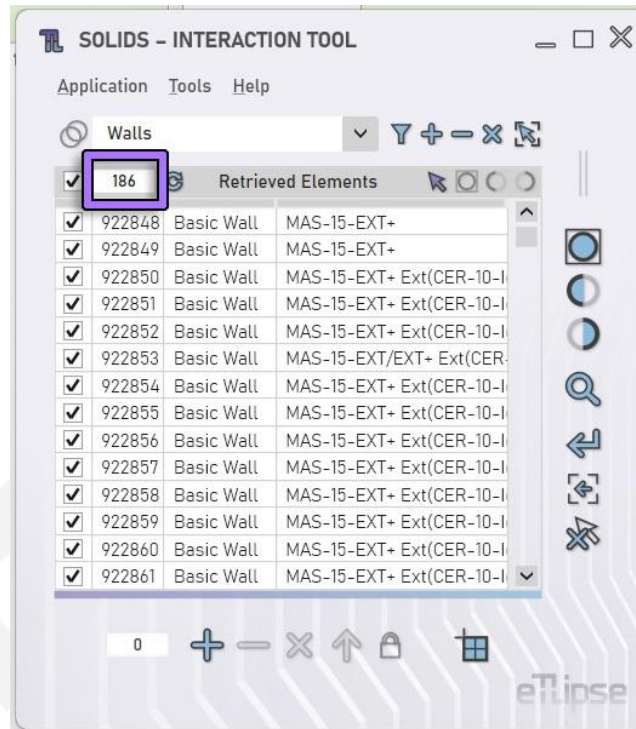
In the third image we have manually resized the window to benefit from a more focused and smaller version of the application, since we are going to use only one list for a while.

List Status



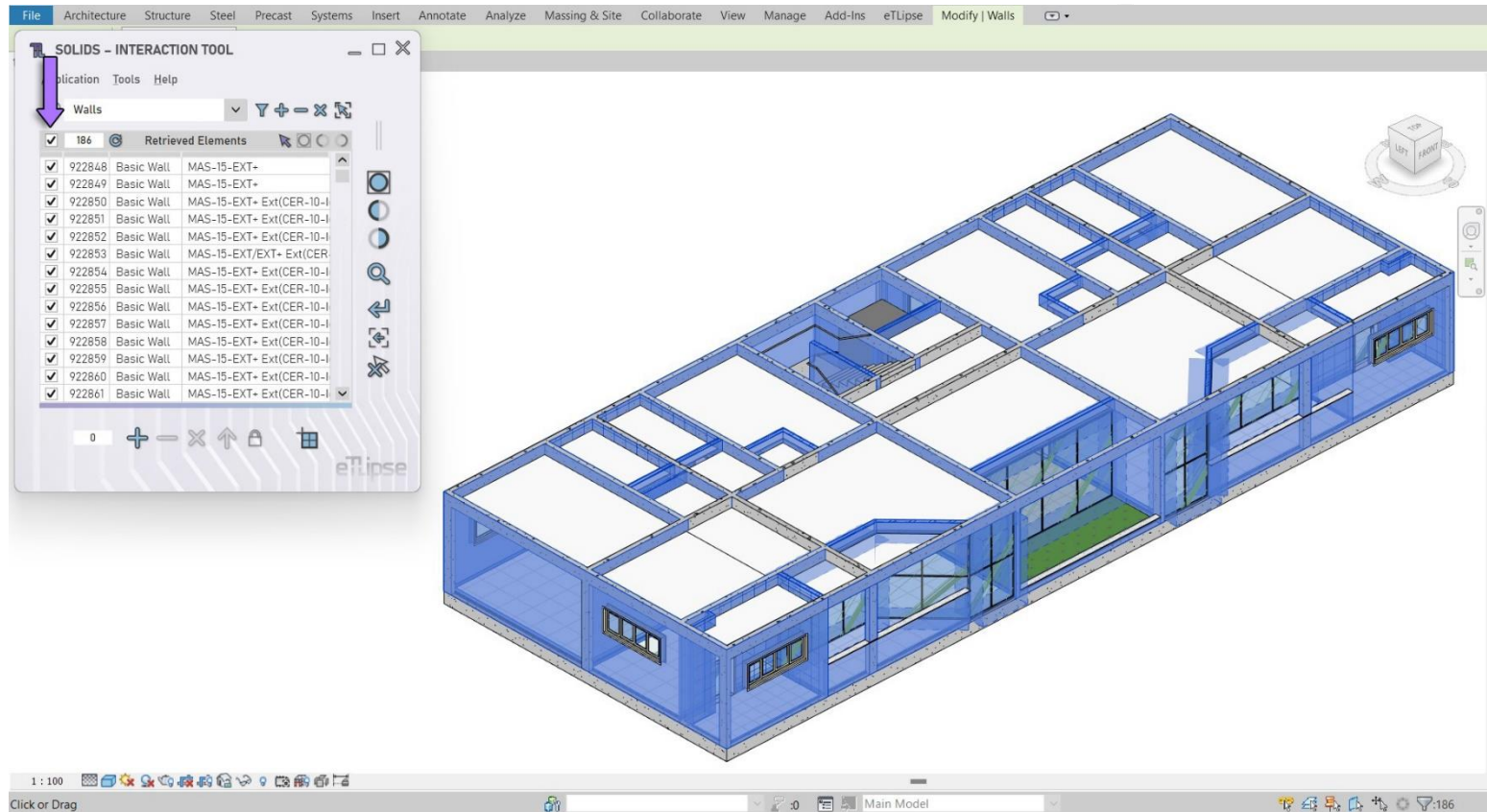
The text indicated in the image is the status label of the list. Here we normally have the title of the elements collection currently listed ("Retrieved Elements", for example), but, also, the temporary status during operations ("Retrieving Elements...", for example).

List Counter

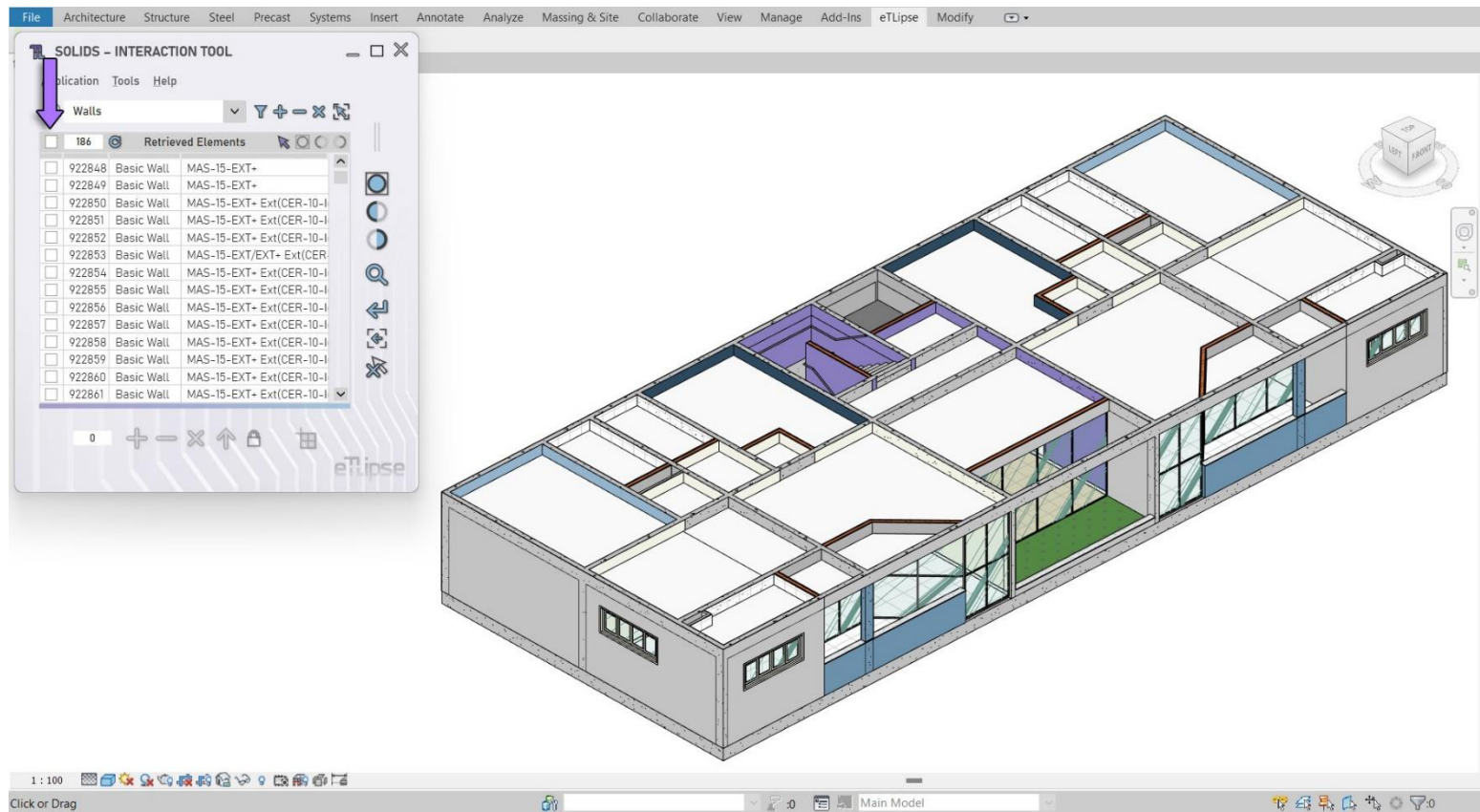


The number indicated in the image is the counter for the number of elements currently listed.

Check/Uncheck All Items



The checkbox indicated in the first image will check/uncheck all items in the list. If no item is currently checked, this feature will check all items (as seen in the first image).

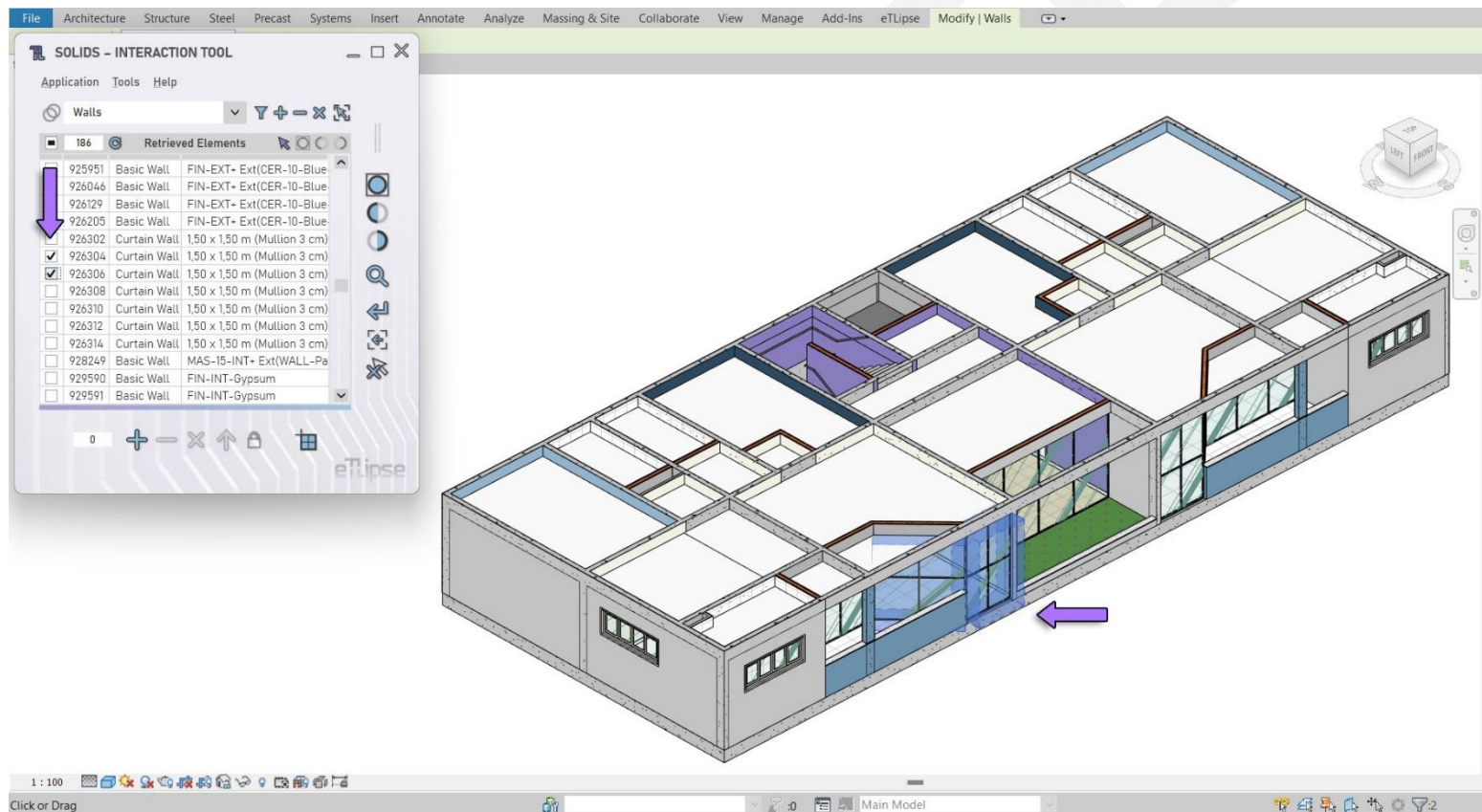


If, otherwise, the list is partially or totally checked, all the items will be unchecked (as seen in the second image).

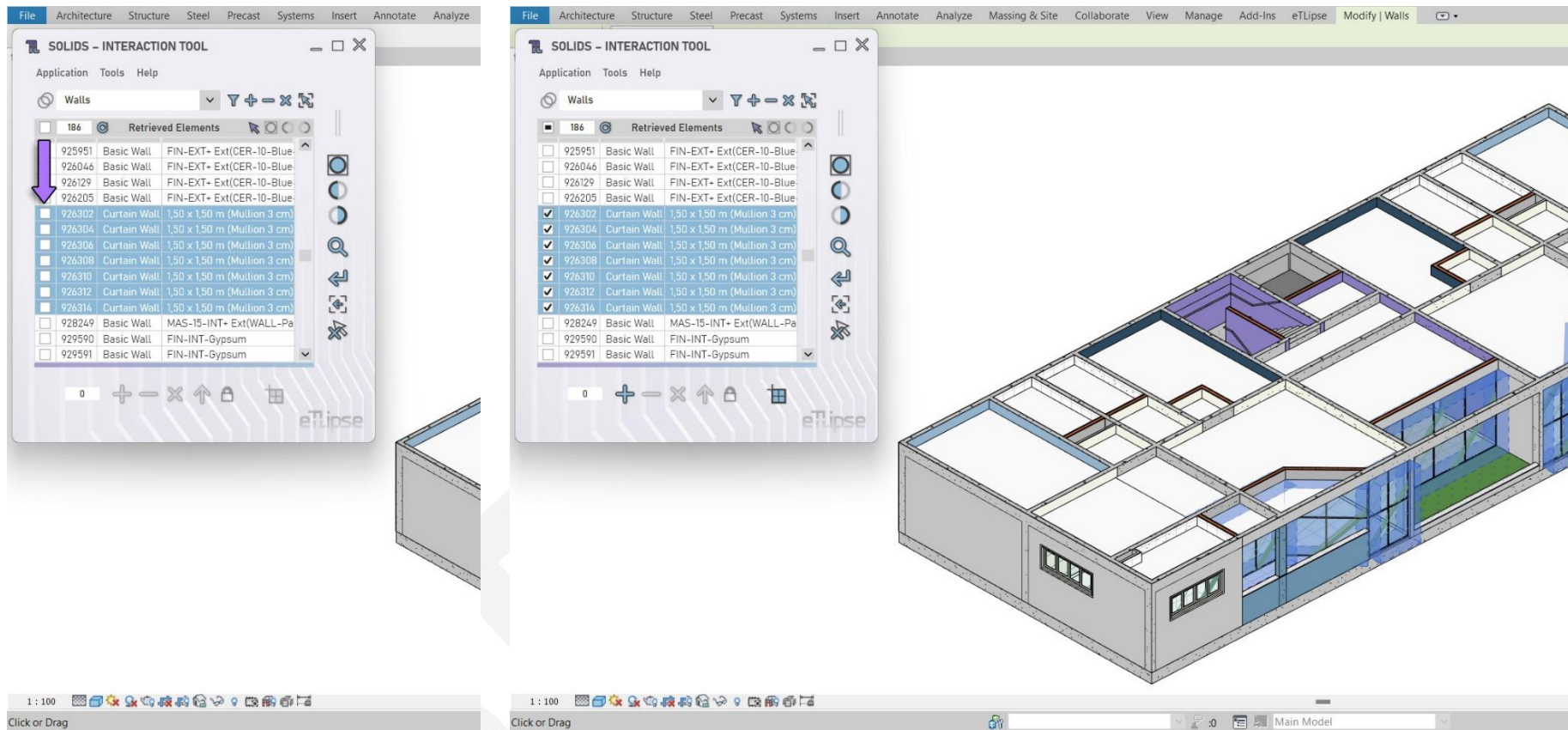
Manually Checking Items

As previously stated, in the first column of the list we have the checkboxes that toggle the selection of elements bound to the items. These tools will basically perform two functions when checked:

1. Enable the bound Revit element(s) for operations that target the list;
2. Highlight the bound element(s) in the Revit active view (if possible and the elements are not from linked models).

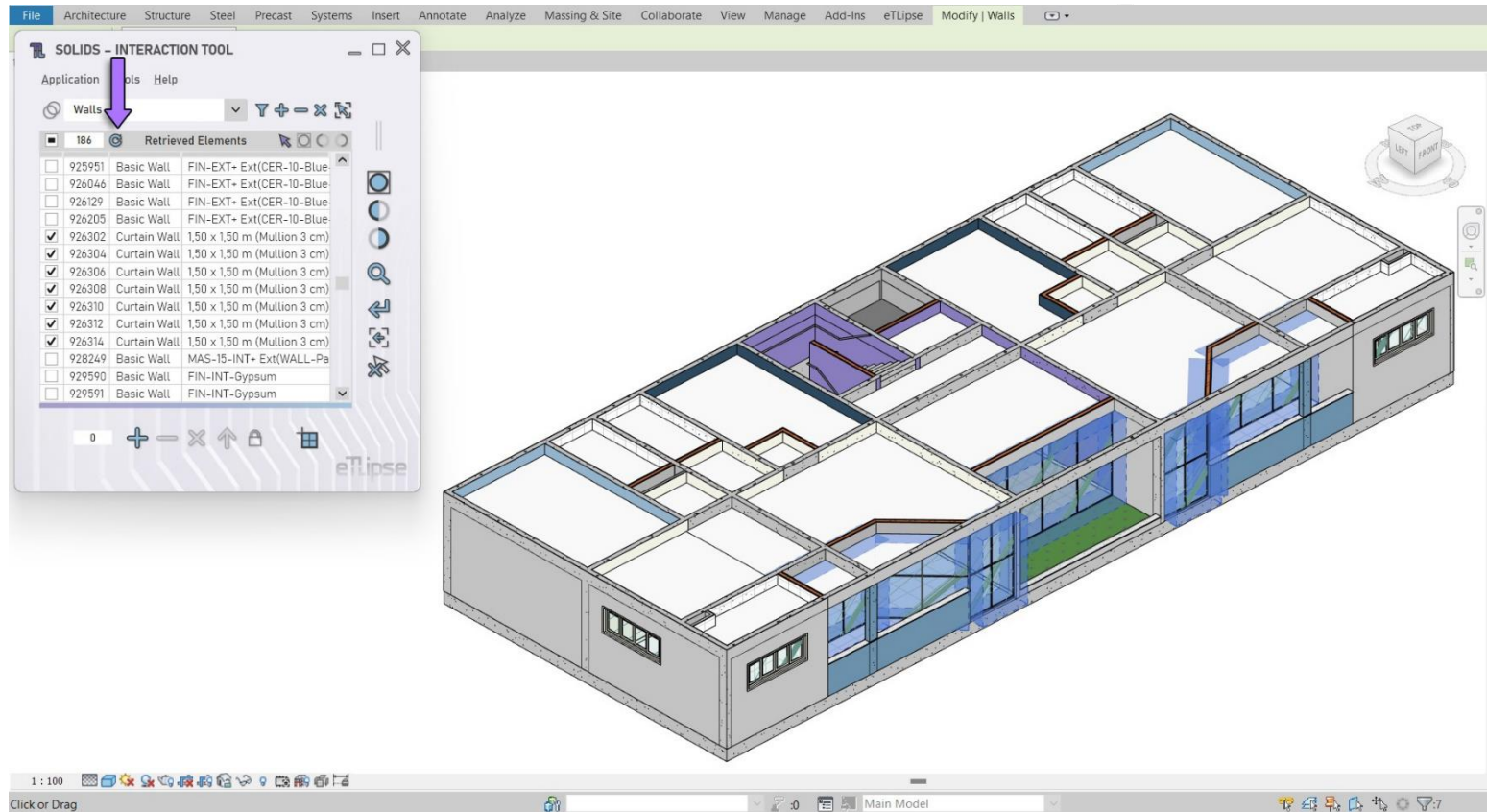


In the first image we have two elements (of the Curtain Wall family) checked in the list and immediately highlighted in the Revit active view.

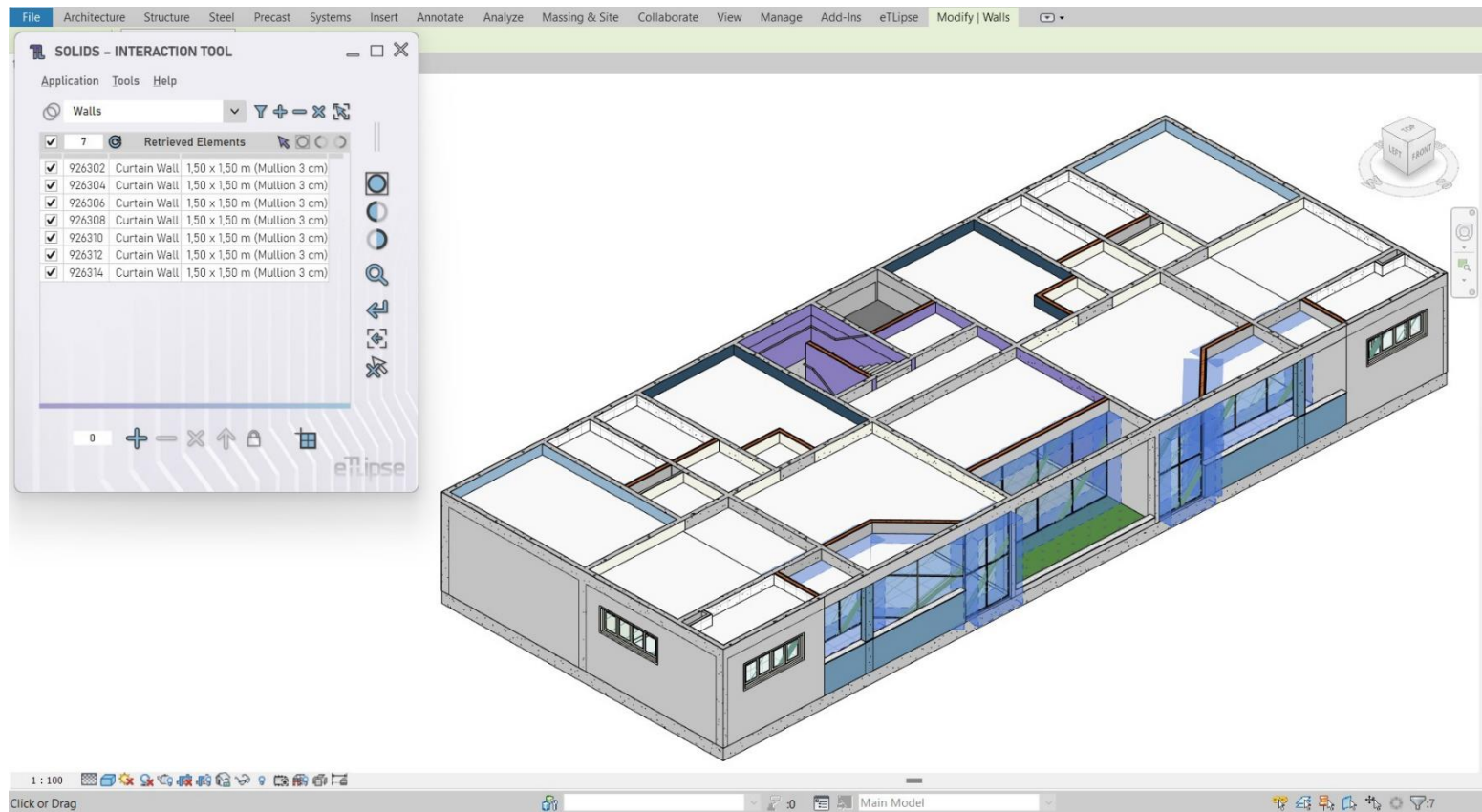


We can also select multiple items in the list (as seen in the second image) and check/uncheck any of their checkboxes to instantly check/uncheck all the checkboxes of the selected items (as seen in the third image).

Filter List

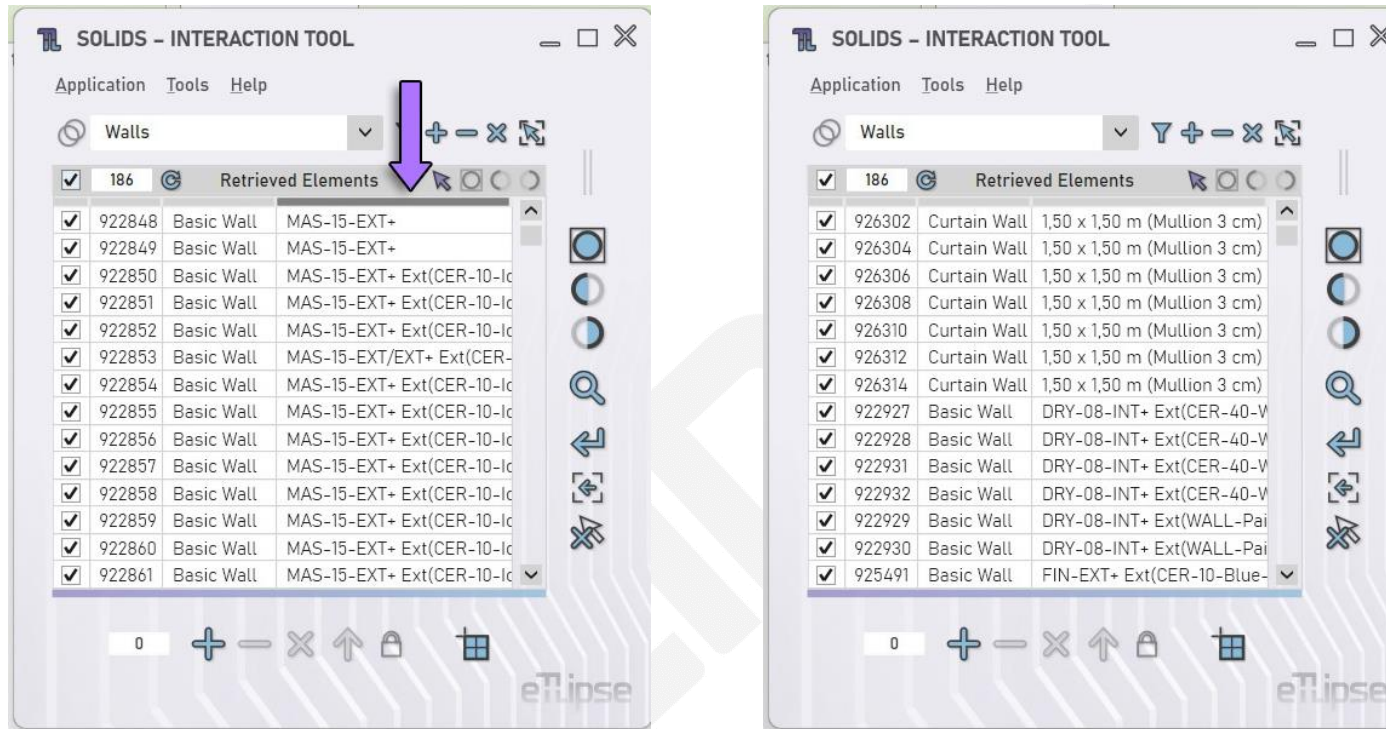


Whenever we want to limit the list to the items currently checked, we can use the **Filter List** button (indicated in the first image).



In the second image we can see that that the original list with 186 elements was reduced to the 7 checked elements after the use of this feature.

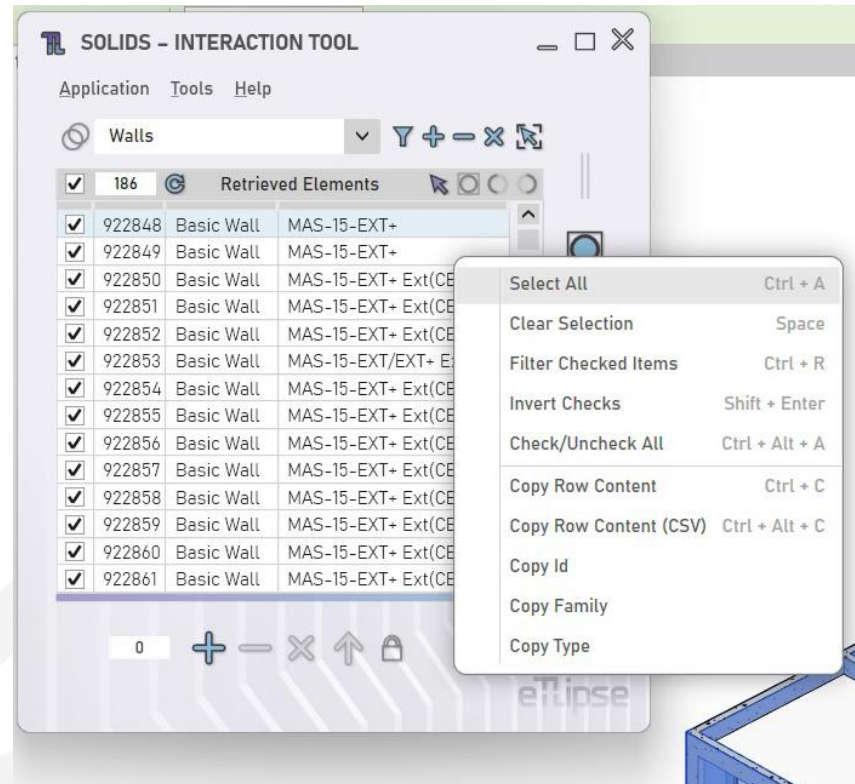
Sorting the List



Whenever we want to sort the list by the value of one of the properties exposed by the columns, we can click the flat header over the respective column, as indicated in the image (where we are clicking to sort the list of elements by their type's name). If the header is clicked again, the list will be sorted in the reversed order.

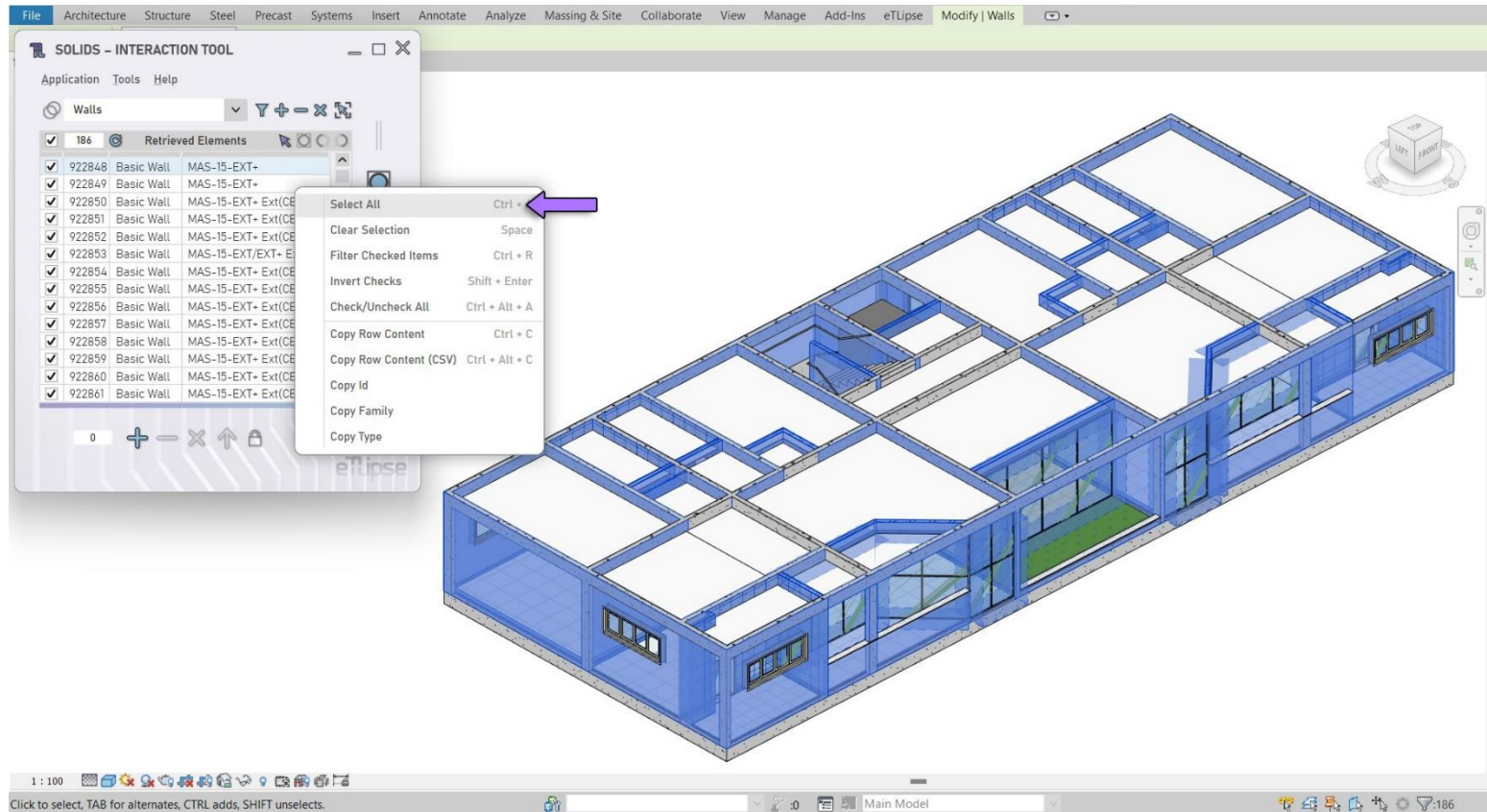
In the second image we can see the result of the sorting by type name.

CONTEXT MENU

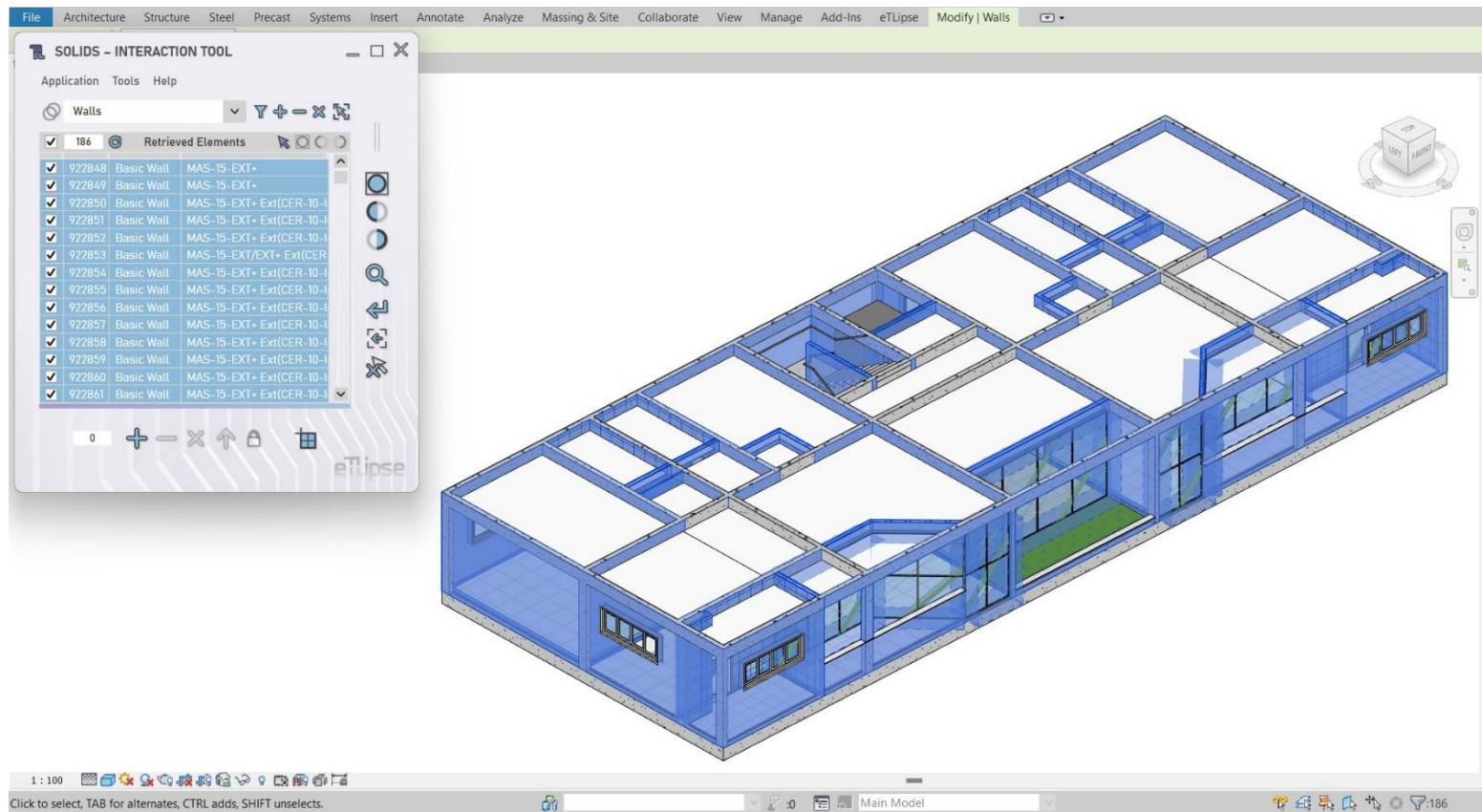


By right clicking any of the items in the list, we have access to the context menu (as seen the image), which provides a set of useful tools (and their keyboard shortcuts) to better manage and extract data from the list.

Select All

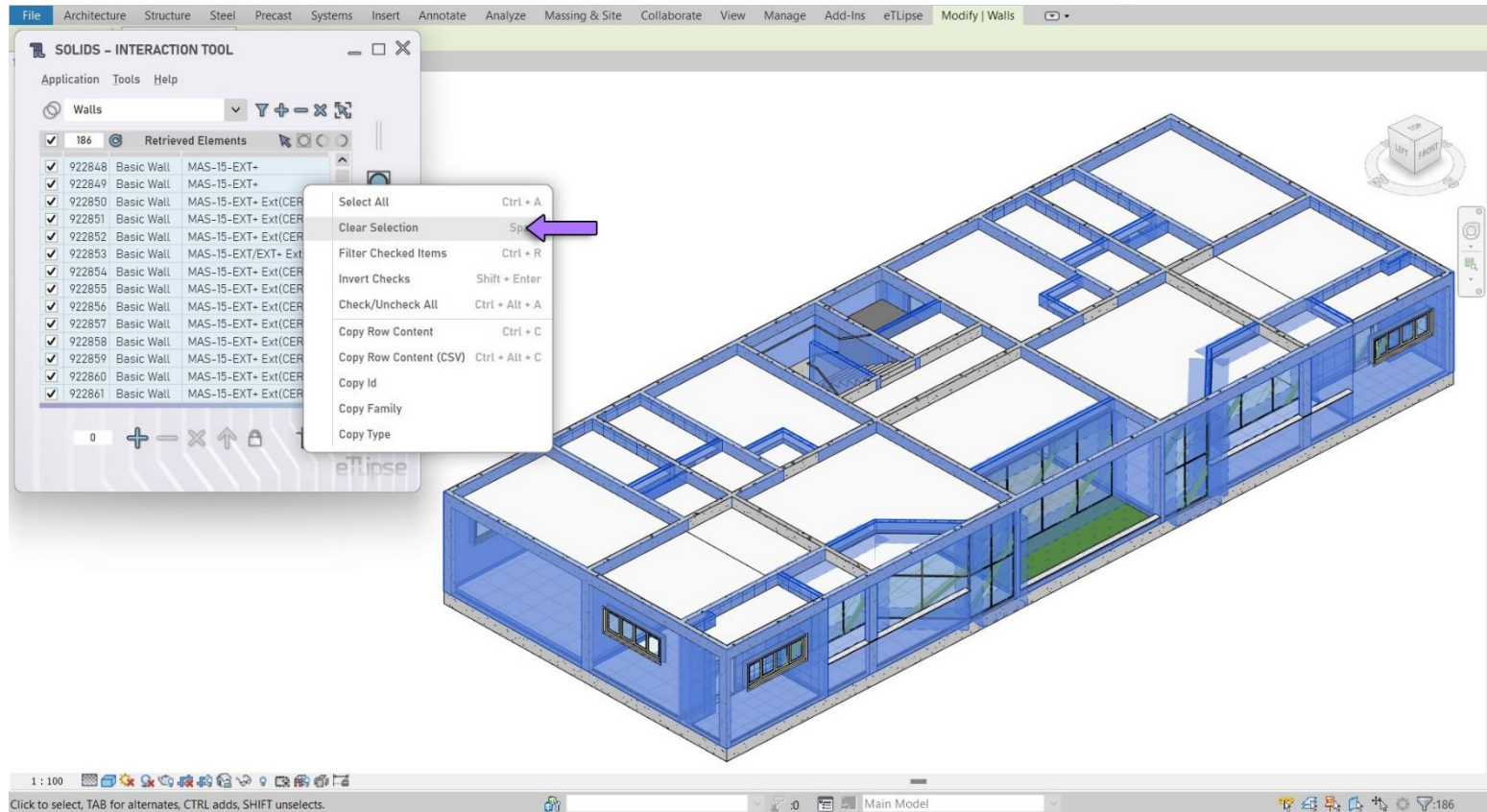


By choosing the **Select All** option (as indicated in the first image), all items in the list are automatically selected (please, note that selecting an item is not the same as checking its checkbox).

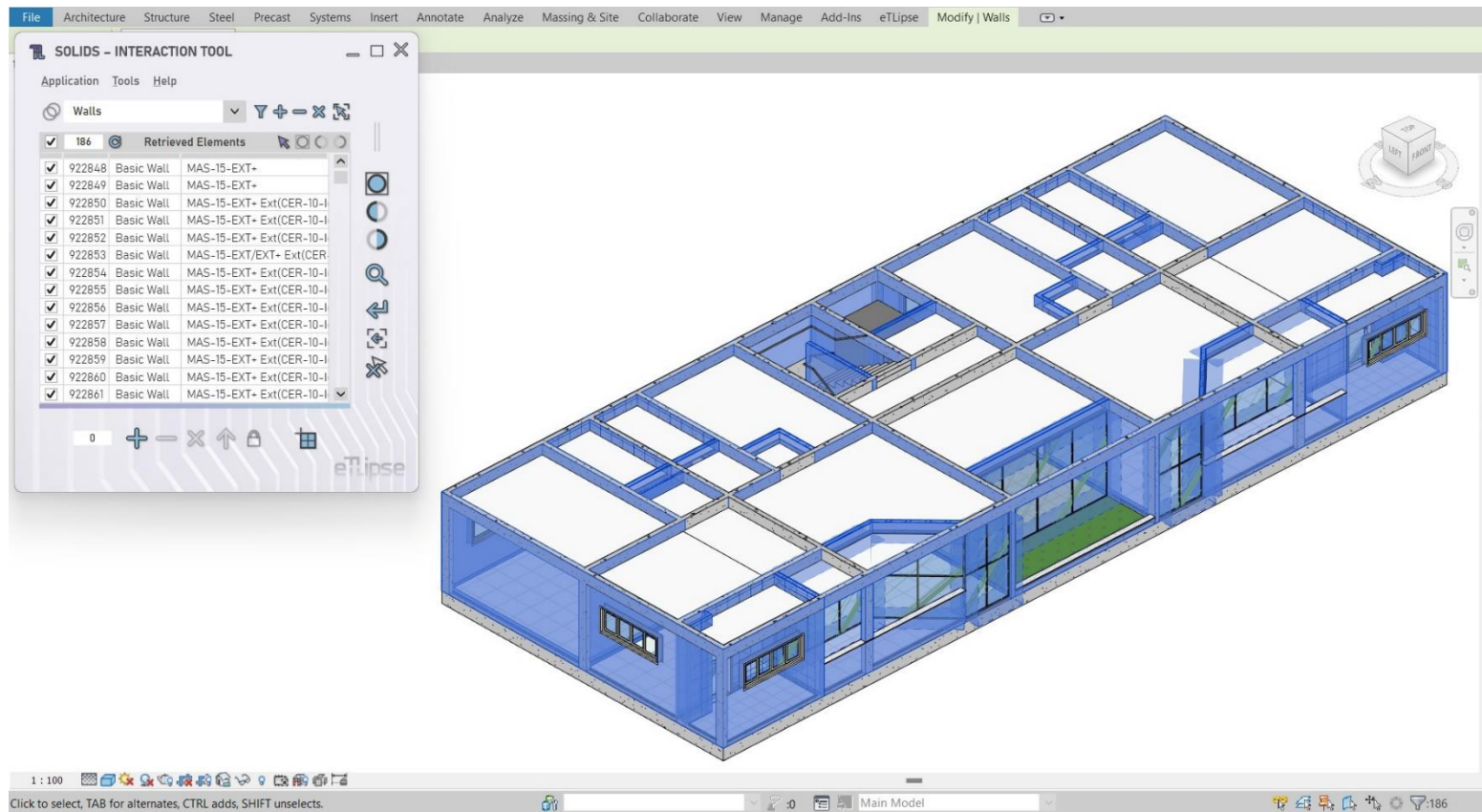


In the second image we can see the result: all items in the list were selected.

Clear Selection

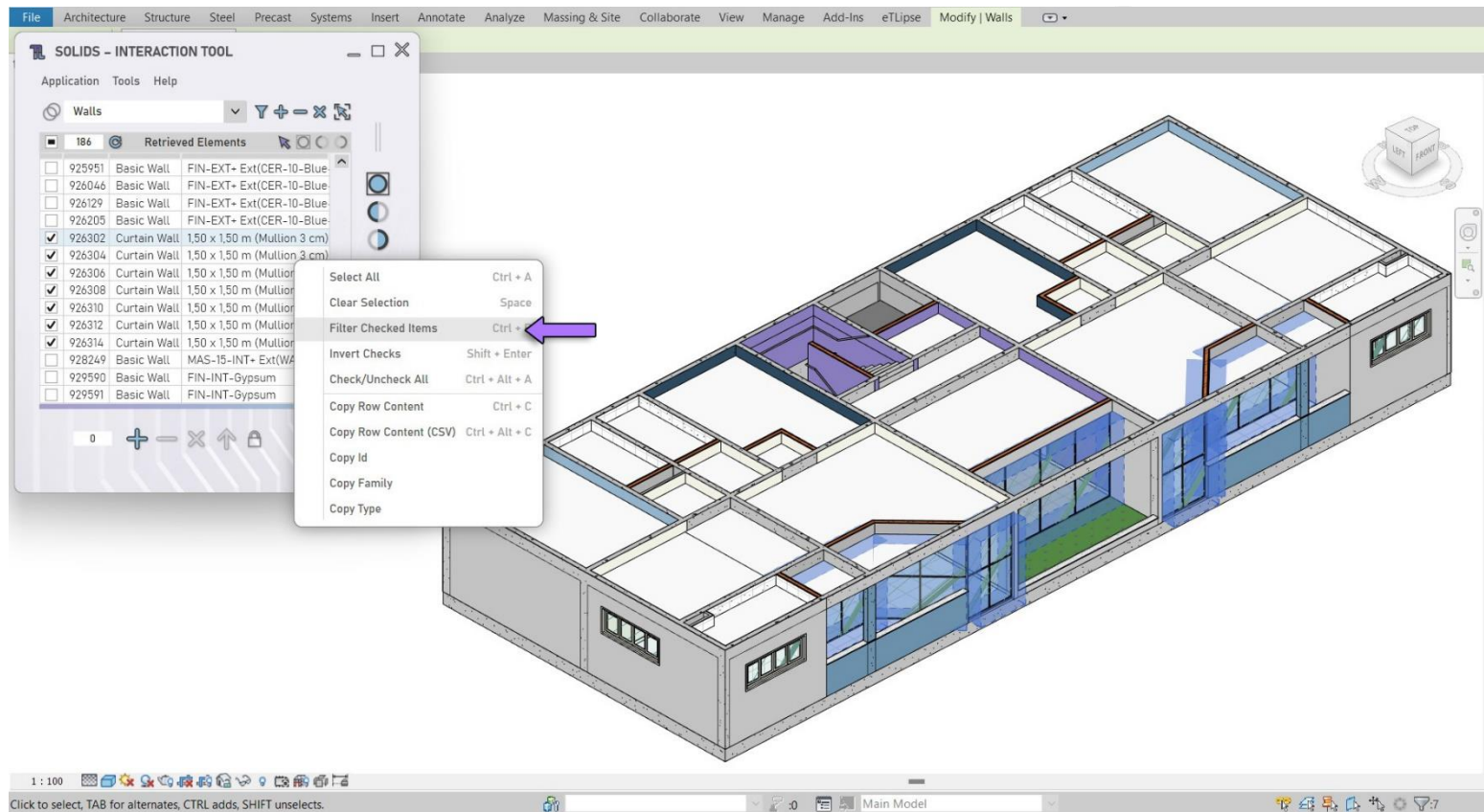


By choosing the **Clear Selection** option (as indicated in the first image), all items in the list are automatically unselected (please, note that unselecting an item is not the same as unchecking its checkbox).

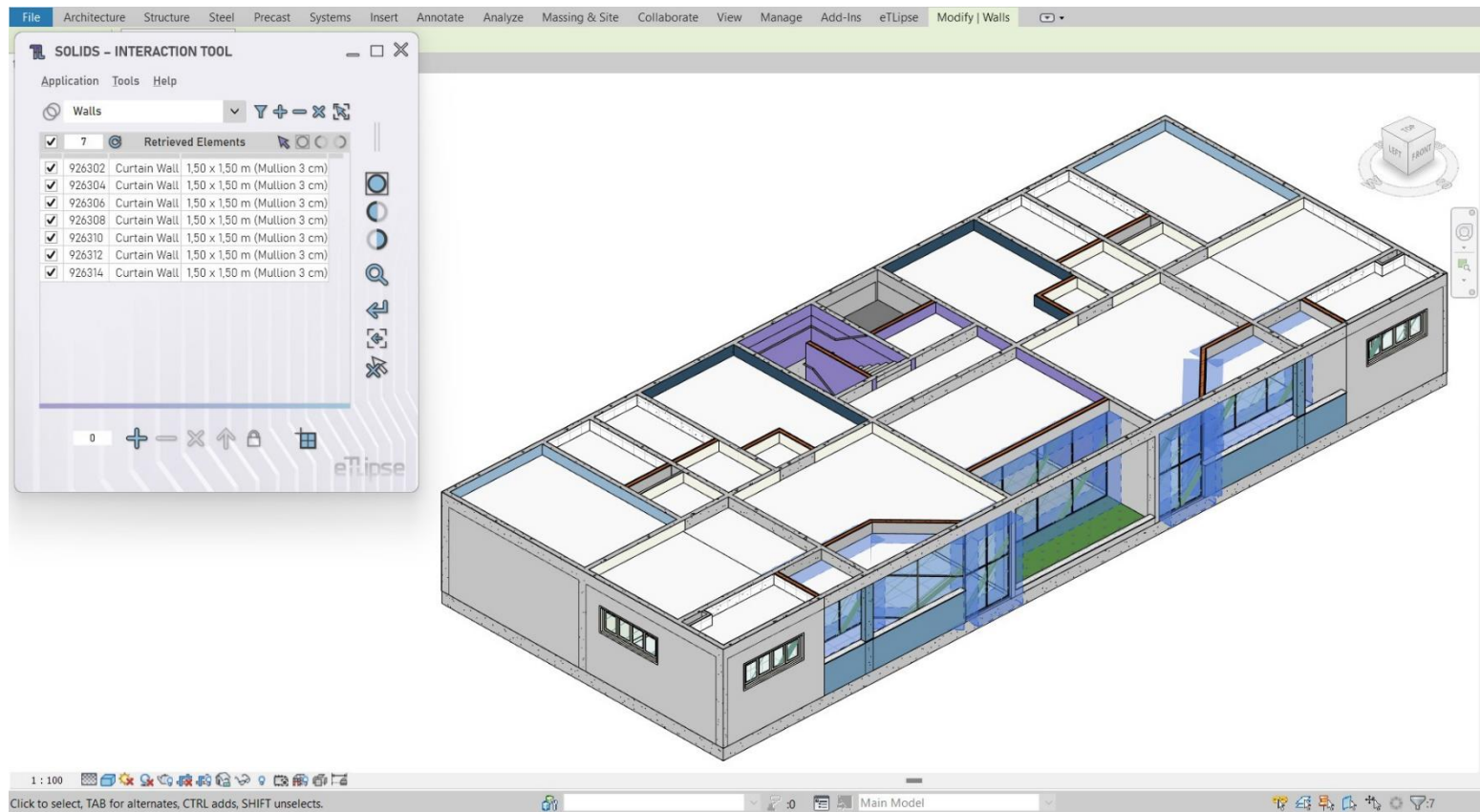


In the second image we can see the result: all items in the list were unselected.

Filter Checked Items

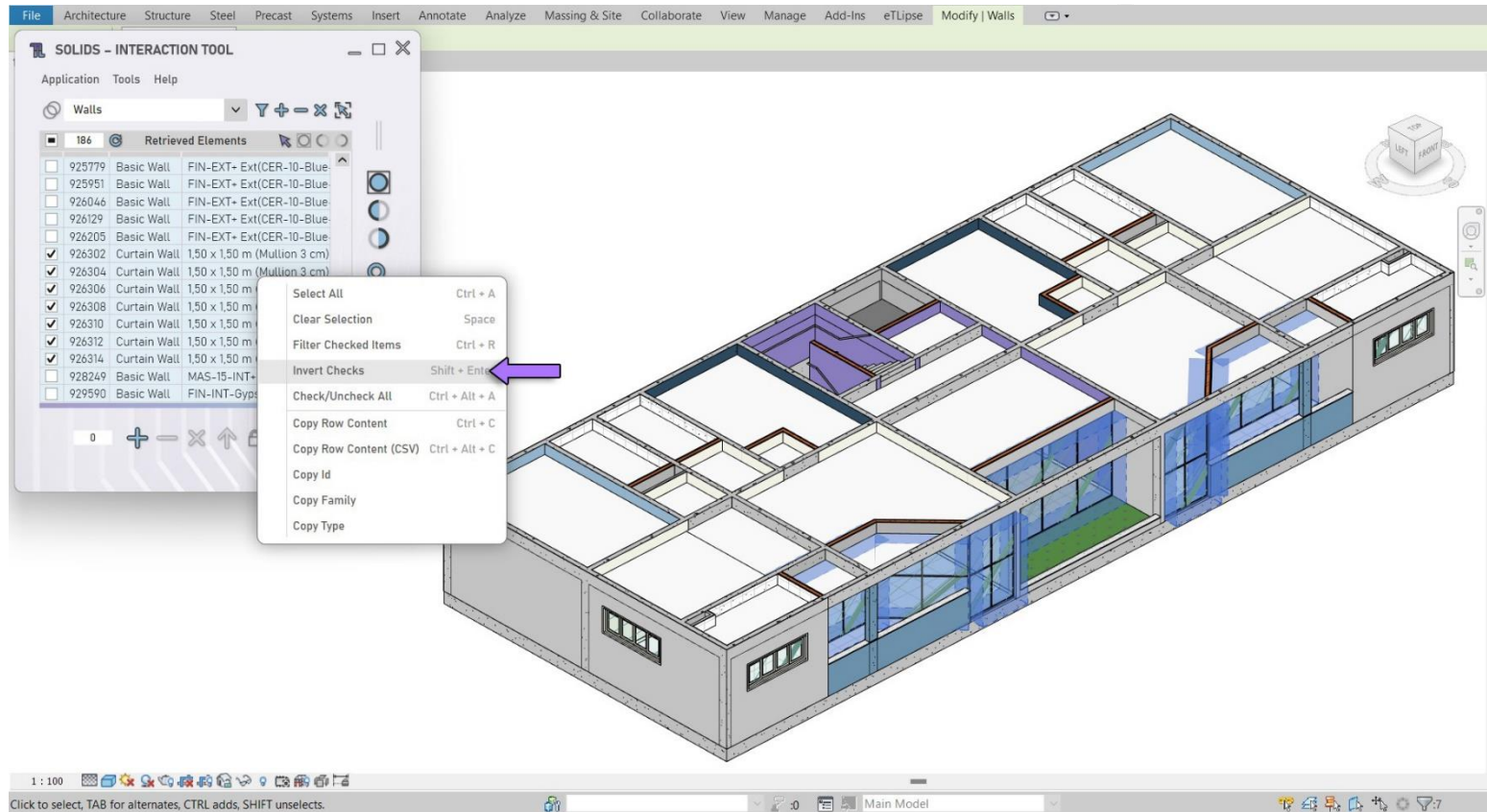


By choosing the **Filter Checked Items** option (as indicated in the first image), the list is automatically reduced to the checked items (the same effect provided by the **Filter List** feature, already explained).

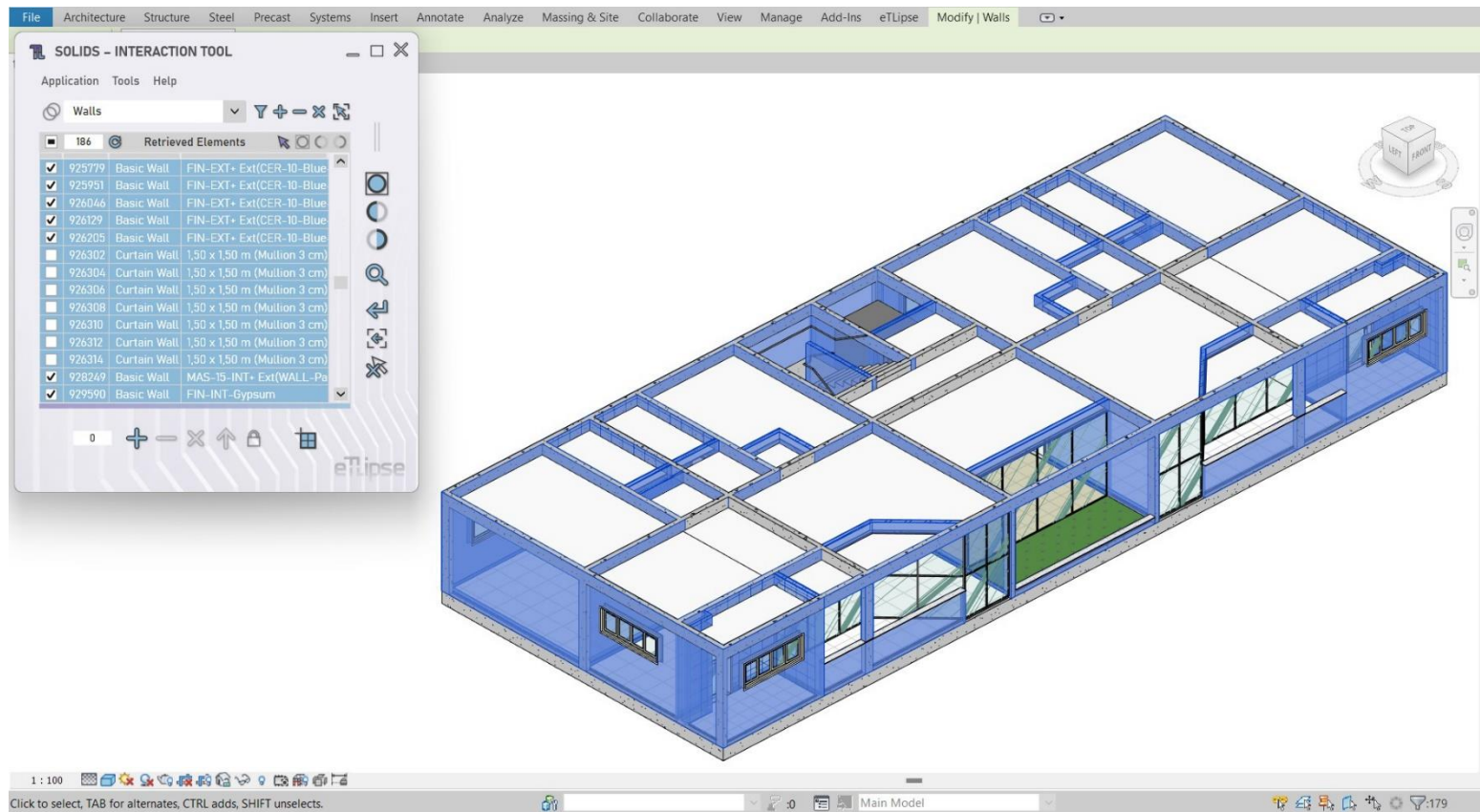


In the second image we can see the result: the original list with 186 elements was reduced to the 7 checked elements after the use of this feature.

Invert Checks

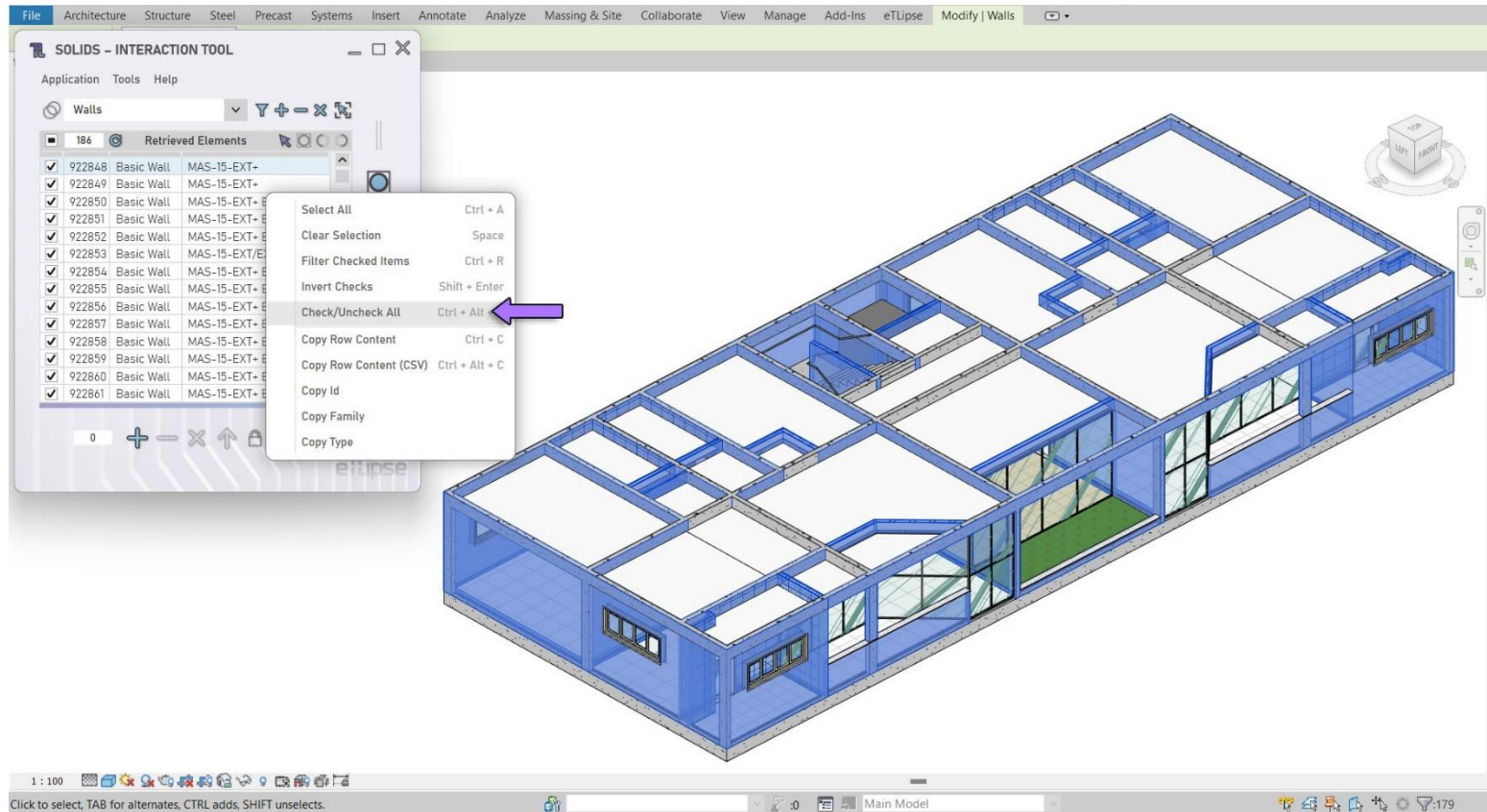


By choosing the **Invert Check** option (as indicated in the first image), all checked items in the list are unchecked and all unchecked items are checked.

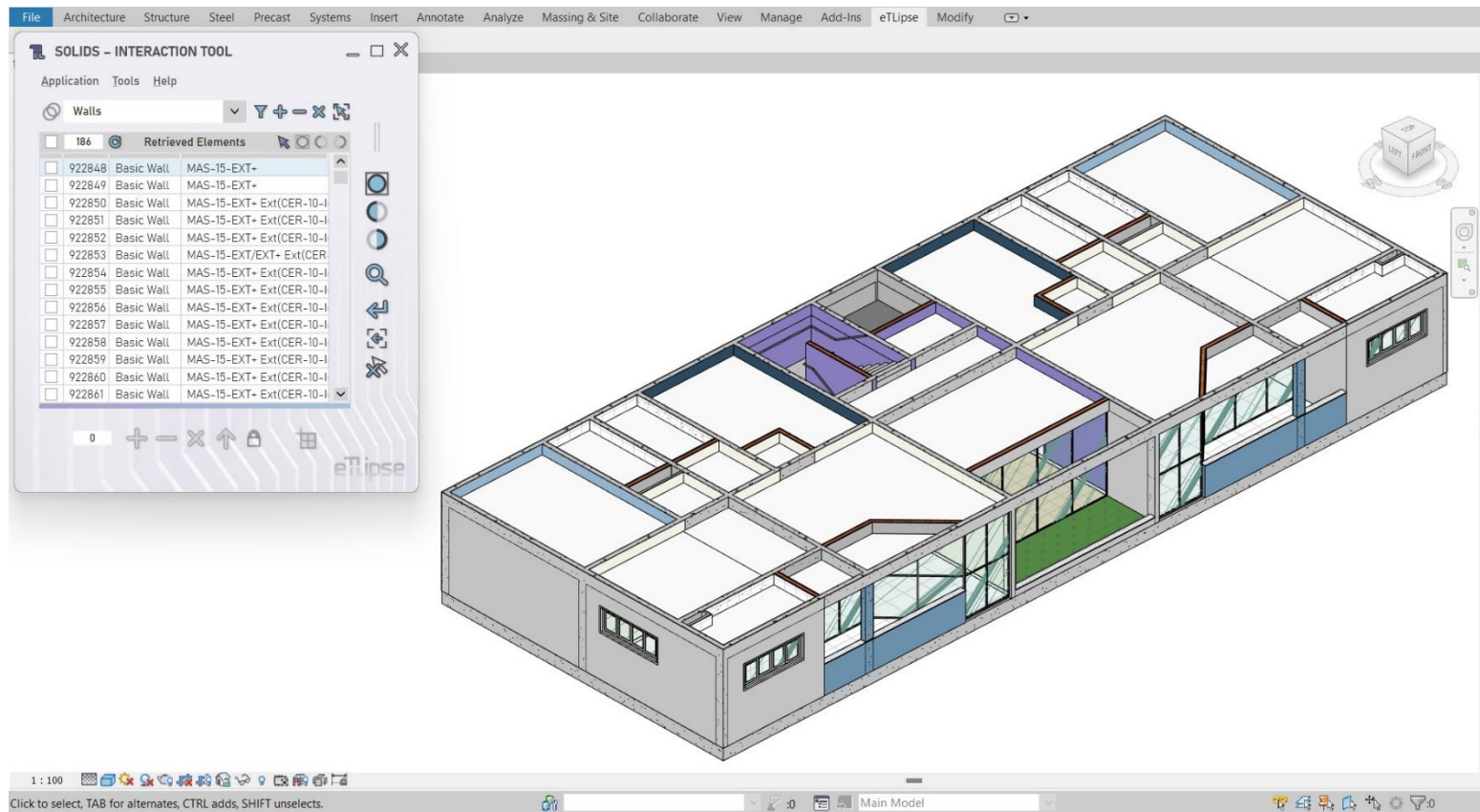


In the second image we can see the result: all items have their checkboxes toggled.

Check/Uncheck All

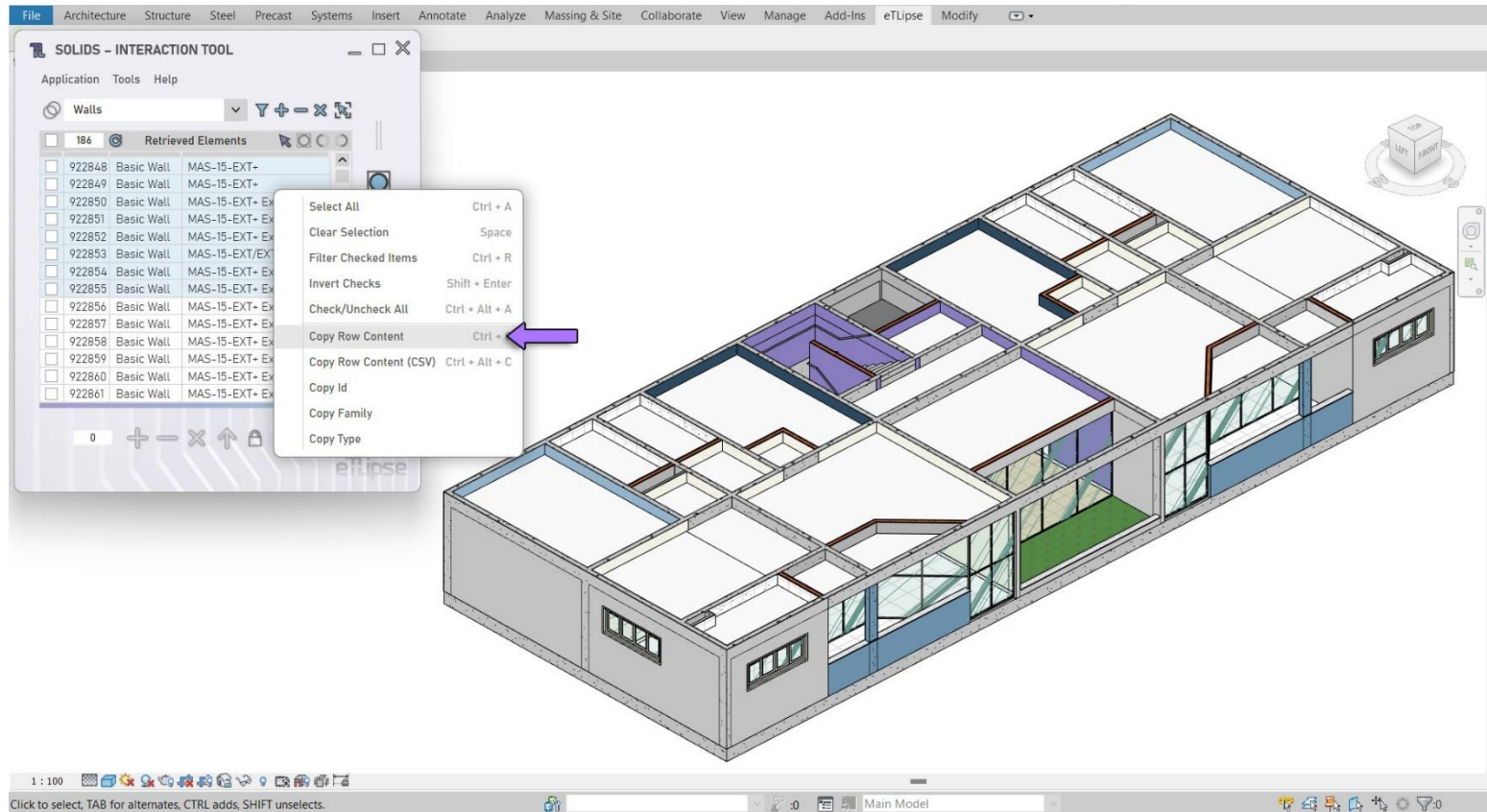


By choosing the **Check/Uncheck All** option (as indicated in the first image), if no item is currently checked, all items will be checked. Otherwise, if the list is partially or totally checked, all the items will be unchecked.

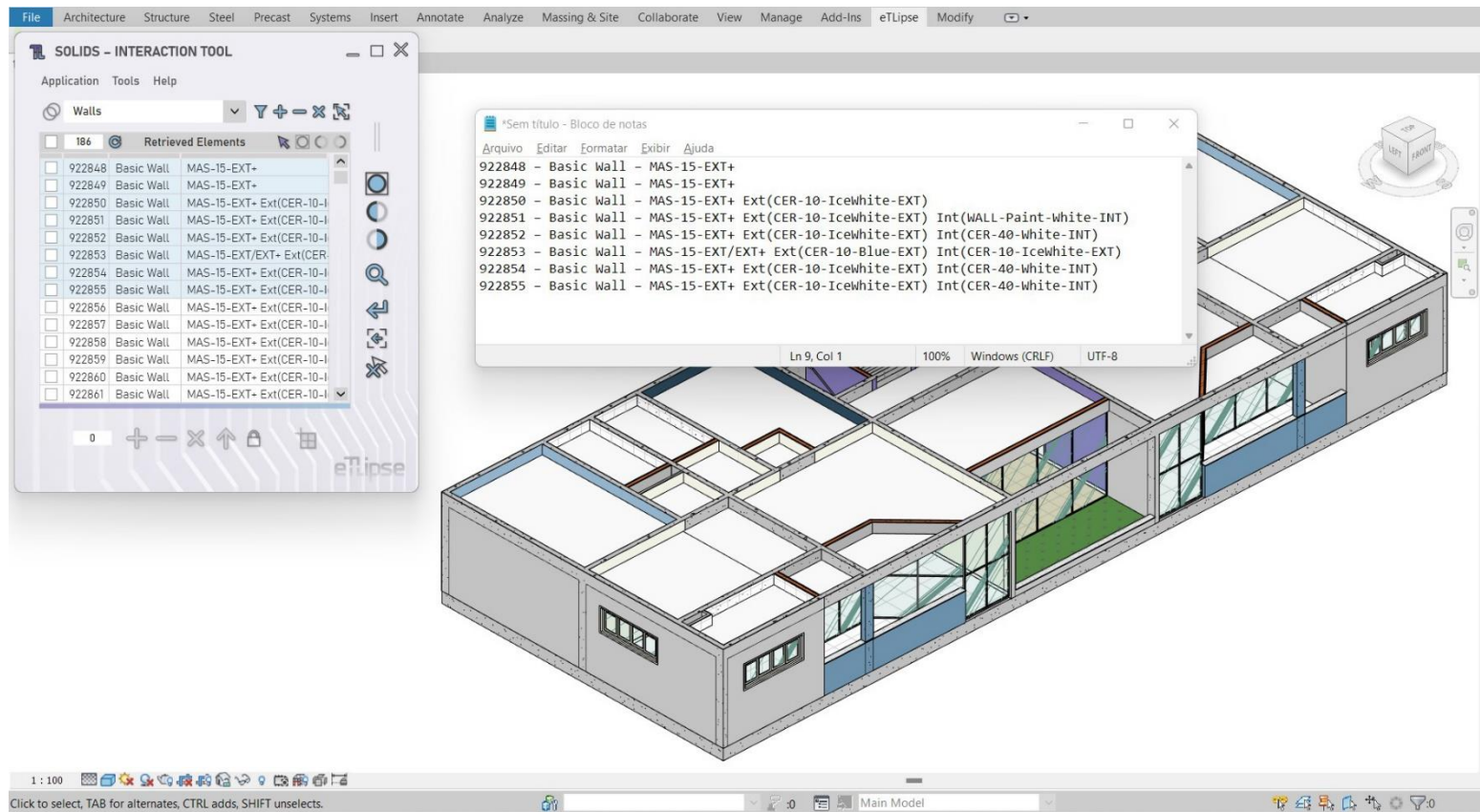


In the second image we can see the result: all items were unchecked, since the feature was performed when the list was partially checked.

Copy Row Content

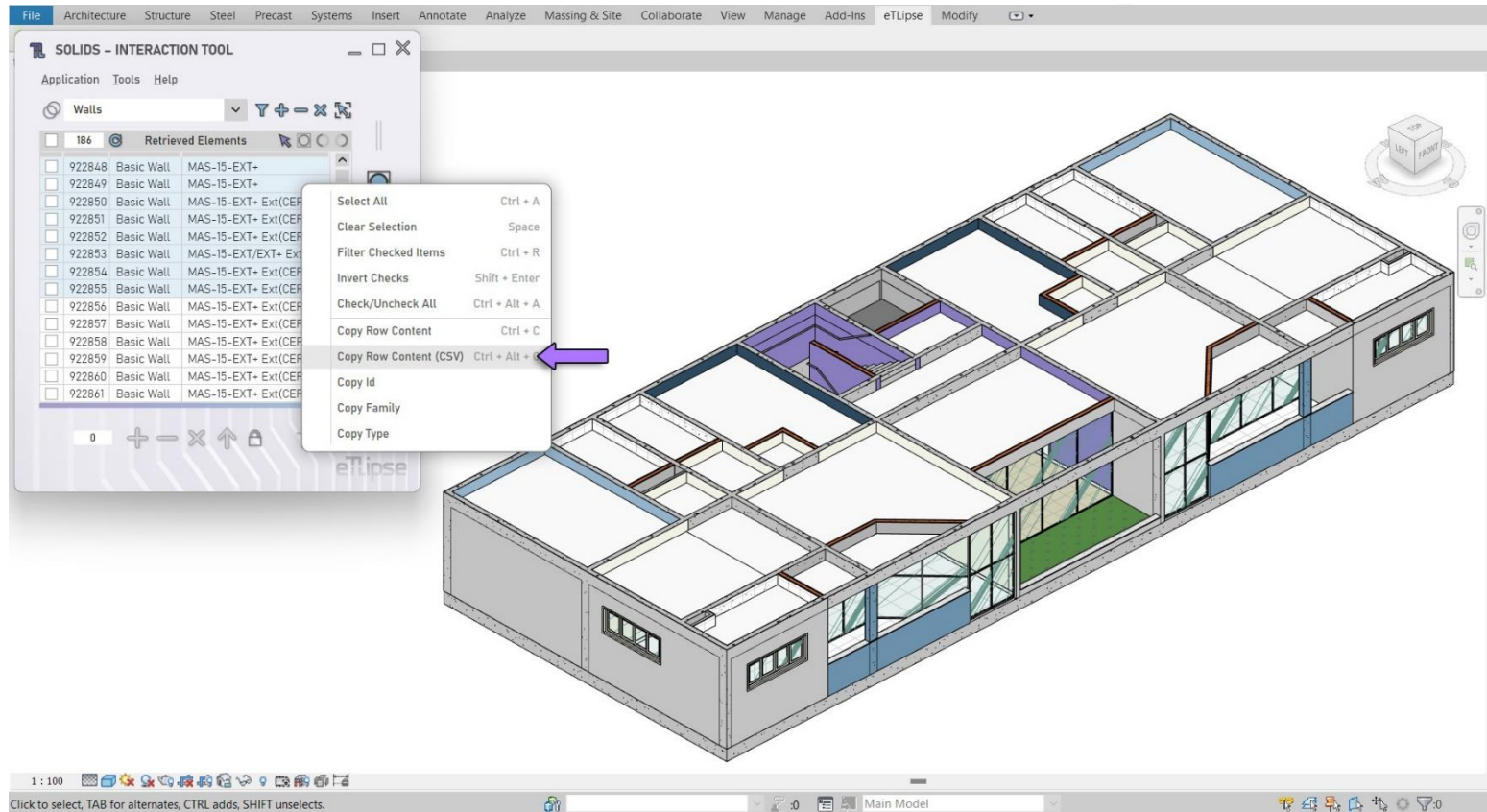


By choosing the **Copy Row Content** option (as indicated in the first image), the values of all the listed properties of all the selected items are copied to the clipboard of the operational system.

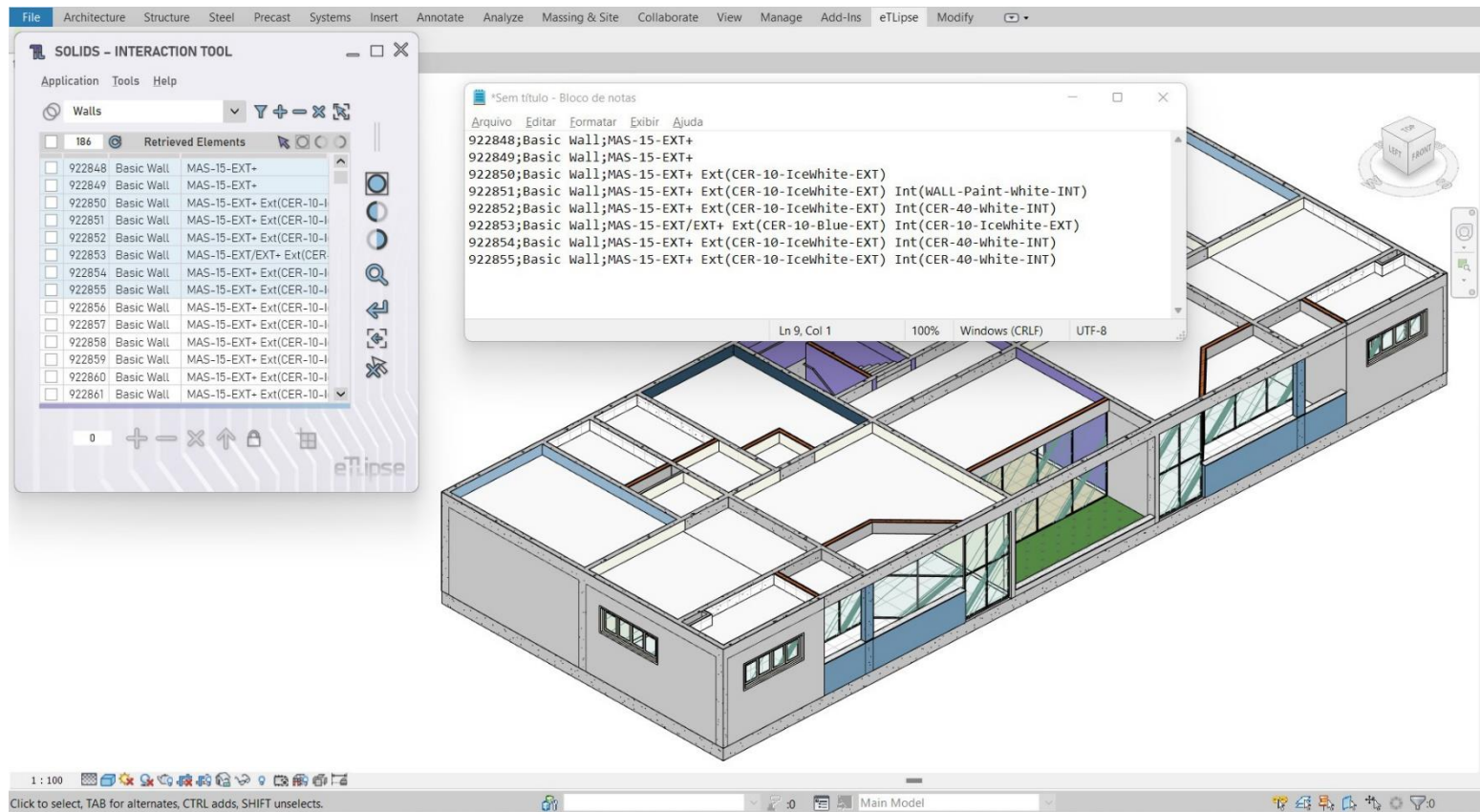


In the second image we can see the result: we pasted the copied content in a plain text editor and, as we can see, it is the content of the properties of the selected items in the list.

Copy Row Content (CSV)

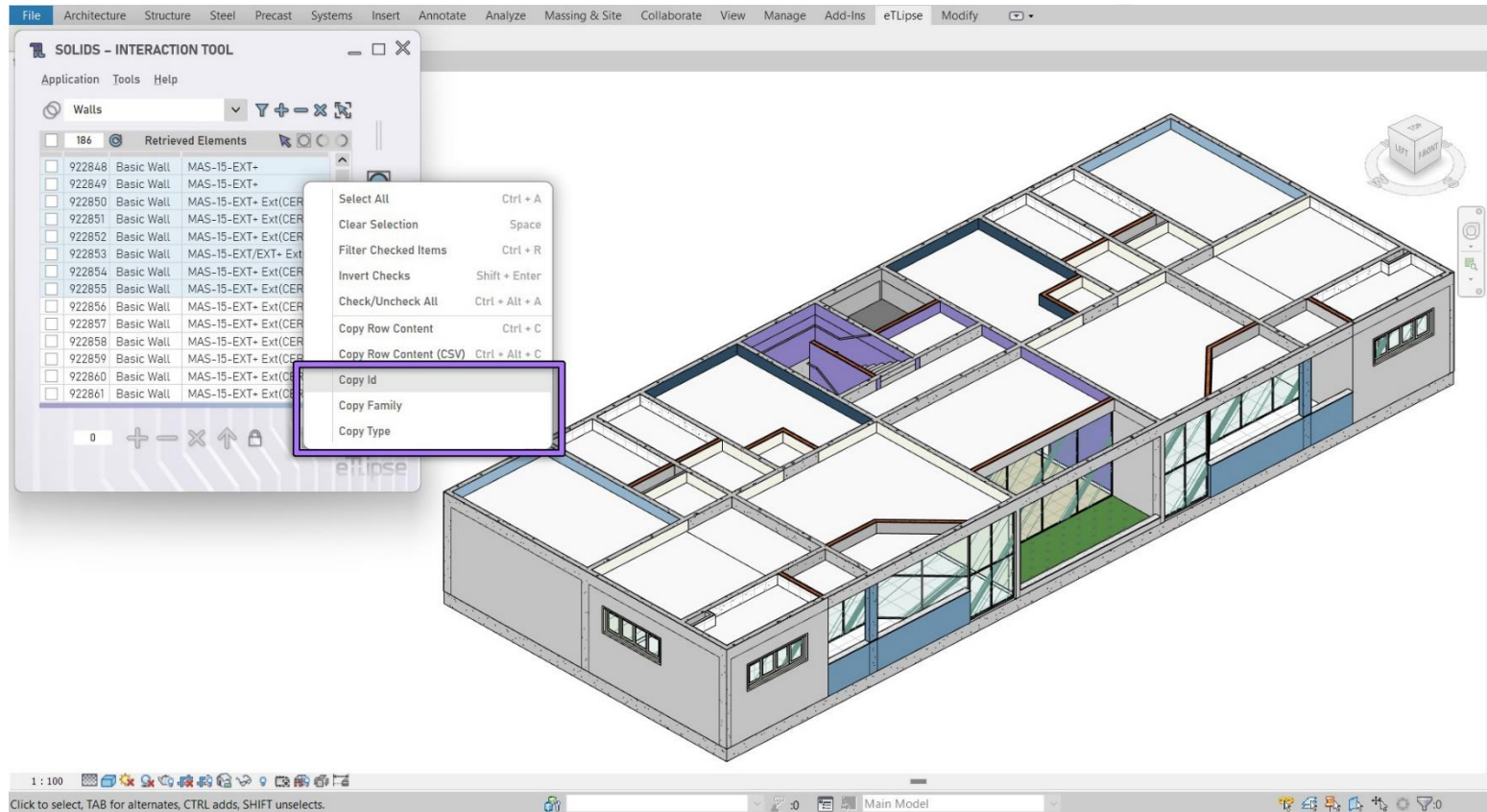


By choosing the **Copy Row Content (CSV)** option (as indicated in the first image), the values of all the listed properties of all the selected items are copied to the clipboard of the operational system with separators commonly used in .CSV formats (this content can be directly pasted into spreadsheet editors).

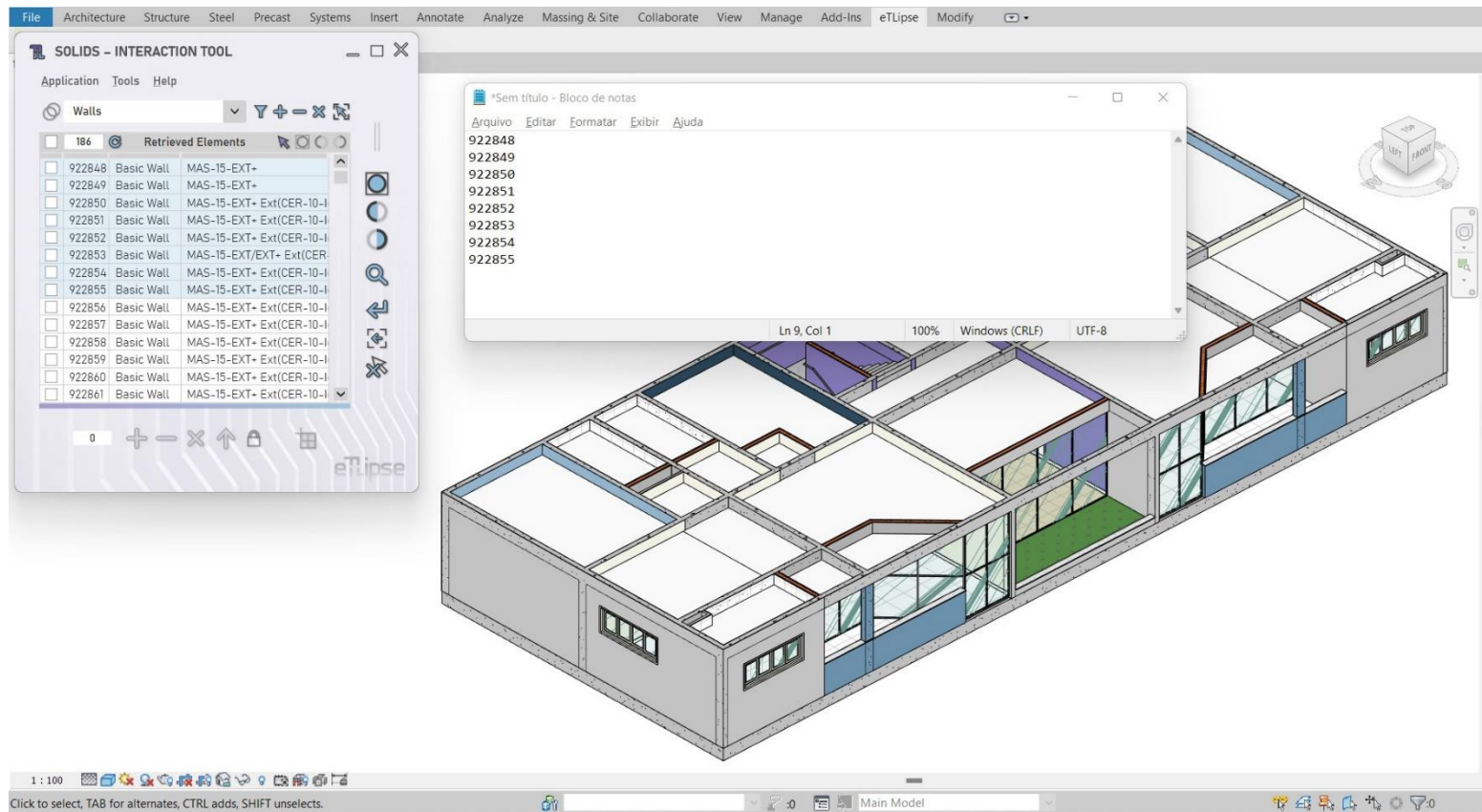


In the second image we can see the result: we pasted the copied content in a plain text editor and, as we can see, it is the content of the properties of the selected items in the list with semicolon separators.

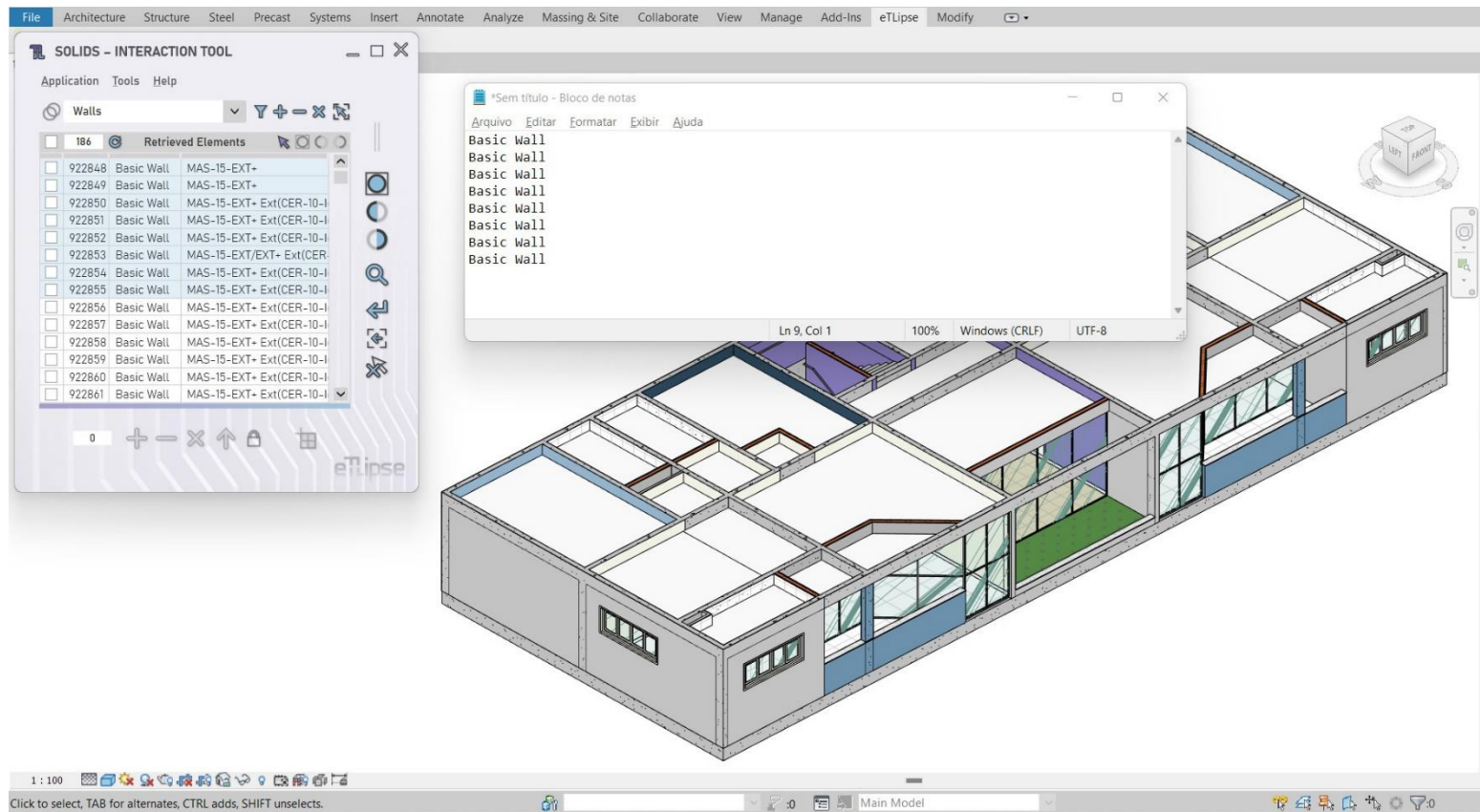
Copy Fields



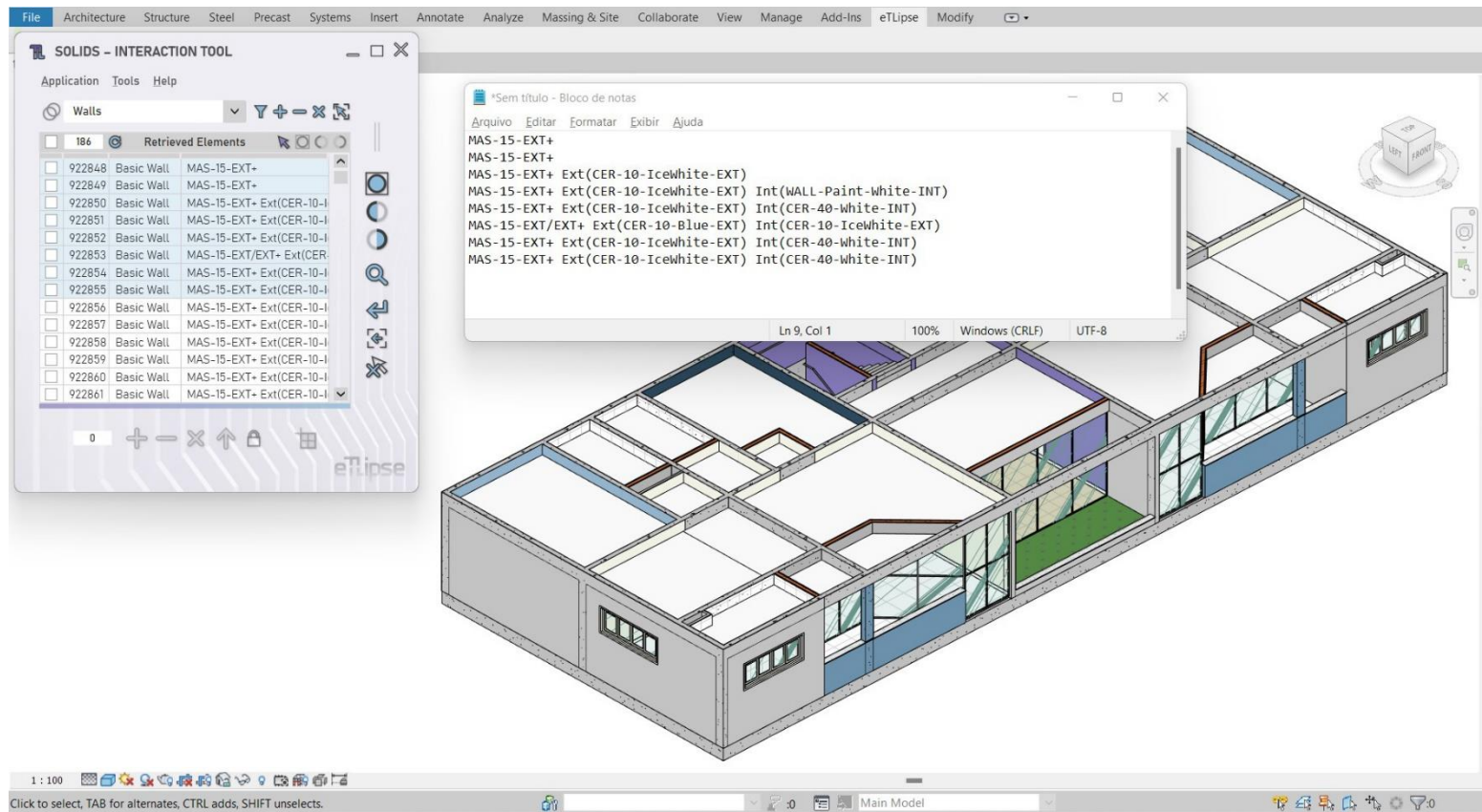
The last options in the context menu regard the copy of the content of a single property among the ones exposed by the columns of the list. In the first image we can see that the available properties in the example are the **Id**, the **Family** and the **Type** of the listed elements.



In the second image we can see the result of the copy of the Id of each listed element.



In the third image we can see the result of the copy of the Family of each listed element.



In the second image we can see the result of the copy of the Type of each listed element.